

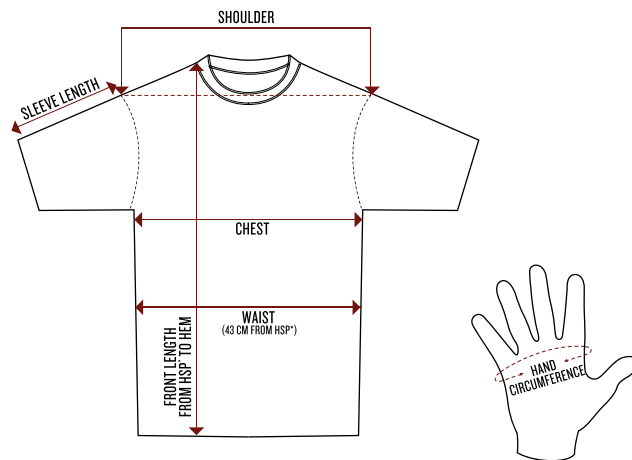
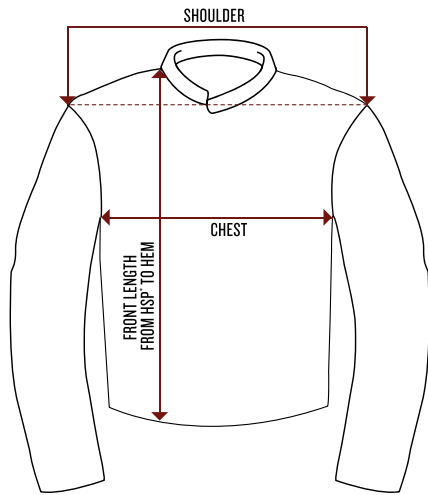
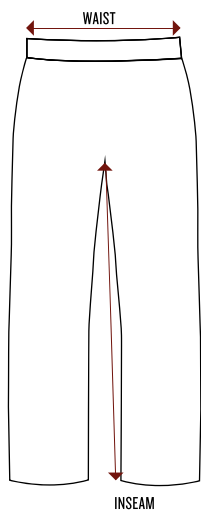
Indian
MOTORCYCLE

APPAREL & GIFTS

DEALER CATALOG

2020/21

APPAREL SIZE CHARTS



| MEN'S V-TWIN FIT JACKETS | | | | | | | | | | | | |
|--------------------------|-------------|-----------|----------|----|-------------------------------------|----|-------------------------------------|----|-----------------------------|----|------------------------------------|----|
| SIZE | CHEST | | SHOULDER | | RIDE LEATHER FRONT LENGTH FROM HSP* | | RIDE TEXTILE FRONT LENGTH FROM HSP* | | MESH FRONT LENGTH FROM HSP* | | RIDE CASUAL FRONT LENGTH FROM HSP* | |
| | IN | CM | IN | CM | IN | CM | IN | CM | IN | CM | IN | CM |
| XS | 40.2 - 41.7 | 102 - 106 | 20.1 | 51 | 25.2 | 64 | 25.6 | 65 | 25.6 | 65 | 25.6 | 65 |
| S | 43.3 - 44.9 | 110 - 114 | 20.5 | 52 | 25.6 | 65 | 26.0 | 66 | 26.0 | 66 | 26.0 | 66 |
| M | 46.5 - 48 | 118 - 122 | 20.9 | 53 | 26.0 | 66 | 26.4 | 67 | 26.4 | 67 | 26.4 | 67 |
| L | 49.6 - 51.2 | 126 - 130 | 21.3 | 54 | 26.4 | 67 | 26.8 | 68 | 26.8 | 68 | 26.8 | 68 |
| XL | 53.5 - 55.1 | 136 - 140 | 22.0 | 56 | 27.2 | 69 | 27.6 | 70 | 27.6 | 70 | 27.6 | 70 |
| XL-TALL | 53.5 - 55.1 | 136 - 140 | 22.0 | 56 | 28.7 | 73 | / | / | 29.1 | 74 | 29.1 | 74 |
| 2XL | 57.5 - 59 | 146 - 150 | 22.8 | 58 | 28.0 | 71 | 28.3 | 72 | 28.3 | 72 | 28.3 | 72 |
| 2XL-TALL | 57.5 - 59 | 146 - 150 | 22.8 | 58 | 29.5 | 75 | / | / | 29.9 | 76 | 29.9 | 76 |
| 3XL | 61.4 - 63 | 156 - 160 | 23.6 | 60 | 28.7 | 73 | 29.1 | 74 | 29.1 | 74 | 29.1 | 74 |
| 3XL-TALL | 61.4 - 63 | 156 - 160 | 23.6 | 60 | 30.3 | 77 | / | / | 30.7 | 78 | 30.7 | 78 |
| 4XL | 65.4 - 66.9 | 166 - 170 | 24.4 | 62 | 29.5 | 75 | 29.9 | 76 | 29.9 | 76 | 29.9 | 76 |
| 5XL | 69.3 - 70.9 | 176 - 180 | 25.2 | 64 | 30.3 | 77 | 30.7 | 78 | 30.7 | 78 | 30.7 | 78 |

| MEN'S V-TWIN FIT VESTS | | | | | | | |
|------------------------|-------------|-----------|----------|----|-----------------------|-------|--|
| SIZE | CHEST | | SHOULDER | | FRONT LENGTH FROM HSP | | |
| | IN | CM | IN | CM | IN | CM | |
| XS | 39 - 40.2 | 99 - 102 | 17.7 | 45 | 27.0 | 68.5 | |
| S | 42.1 - 43.3 | 107 - 110 | 18.1 | 46 | 27.4 | 69.5 | |
| M | 45.3 - 46.5 | 115 - 118 | 18.5 | 47 | 27.8 | 70.5 | |
| L | 48.4 - 49.6 | 123 - 126 | 18.9 | 48 | 28.1 | 71.5 | |
| XL | 52.4 - 53.5 | 133 - 136 | 19.7 | 50 | 28.9 | 73.5 | |
| 2XL | 56.3 - 57.5 | 143 - 146 | 20.5 | 52 | 29.7 | 75.5 | |
| 3XL | 60.2 - 61.4 | 153 - 156 | 21.3 | 54 | 30.5 | 77.5 | |
| 4XL | 64.2 - 65.4 | 163 - 166 | 22.0 | 56 | 31.3 | 79.5 | |
| 5XL | 68.1 - 69.3 | 173 - 176 | 22.8 | 58 | 40.0 | 101.5 | |

| MEN'S RELAXED FIT JACKETS | | | | | | |
|---------------------------|-------|-------|----------|------|------------------------|------|
| SIZE | CHEST | | SHOULDER | | FRONT LENGTH FROM HSP* | |
| | IN | CM | IN | CM | IN | CM |
| S | 50 | 127 | 20.4 | 51.8 | 24.5 | 62 |
| M | 52.5 | 133.3 | 21 | 53.3 | 25 | 63.5 |
| L | 58 | 147.3 | 22 | 55.9 | 26 | 65.5 |
| XL | 62.5 | 158.8 | 23 | 58.4 | 26.5 | 67 |
| 2XL | 66 | 167.6 | 24 | 61 | 27 | 69 |
| 3XL | 68 | 172.7 | 24.5 | 62.2 | 27.5 | 70 |

Relaxed fit is wider in the shoulder, body and sleeve and shorter in body length than the V-Twin fit.

| MEN'S CHAPS | | | | | |
|-------------|-------|-----|--------|------|--|
| SIZE | WAIST | | INSEAM | | |
| | IN | CM | IN | CM | |
| M | 35 | 89 | 33 | 84.5 | |
| L | 38 | 97 | 33 | 84.5 | |
| XL | 41 | 105 | 33 | 84.5 | |
| 2XL | 44.5 | 113 | 33 | 84.5 | |
| 3XL | 47.5 | 121 | 33 | 84.5 | |
| 4XL | 51 | 129 | 33 | 84.5 | |
| 5XL | 54 | 137 | 33 | 84.5 | |

| RAINSUIT- JACKET | | | | | | |
|------------------|-------|-----|----------|----|------------------------|------|
| SIZE | CHEST | | SHOULDER | | FRONT LENGTH FROM HSP* | |
| | IN | CM | IN | CM | IN | CM |
| XS | 44.9 | 114 | 21.3 | 54 | 27.0 | 68.5 |
| S | 48.0 | 122 | 21.7 | 55 | 27.4 | 69.5 |
| M | 51.2 | 130 | 22.0 | 56 | 27.8 | 70.5 |
| L | 54.3 | 138 | 22.4 | 57 | 28.1 | 71.5 |
| XL | 58.3 | 148 | 23.2 | 59 | 28.9 | 73.5 |
| 2XL | 62.2 | 158 | 24.0 | 61 | 29.7 | 75.5 |
| 3XL | 66.1 | 168 | 24.8 | 63 | 30.5 | 77.5 |
| 4XL | 70.1 | 178 | 25.6 | 65 | 31.3 | 79.5 |
| 5XL | 74.0 | 188 | 26.4 | 67 | 32.1 | 81.5 |

| RAINSUIT- PANTS | | | | |
|-----------------|-----------------|-----|--------|------|
| SIZE | WAIST (RELAXED) | | INSEAM | |
| | IN | CM | IN | CM |
| XS | 33.1 | 84 | 31.9 | 81 |
| S | 34.6 | 88 | 32.3 | 82 |
| M | 36.2 | 92 | 32.7 | 83 |
| L | 39.4 | 100 | 33.3 | 84.5 |
| XL | 42.5 | 108 | 33.9 | 86 |
| 2XL | 45.7 | 116 | 34.4 | 87.5 |
| 3XL | 48.8 | 124 | 35.0 | 89 |
| 4XL | 52.0 | 132 | 35.6 | 90.5 |
| 5XL | 55.1 | 140 | 36.2 | 92 |

| WOMEN'S V-TWIN FIT JACKETS | | | | | | | | | | | | |
|----------------------------|-------|-----|----------|----|---|----|--|------|---|----|---|----|
| | CHEST | | SHOULDER | | RIDE LEATHER FRONT LENGTH FROM HSP* | | RIDE MESH FRONT LENGTH FROM HSP* | | LEATHER CASUAL FRONT LENGTH FROM HSP* | | TEXTILE CASUAL FRONT LENGTH FROM HSP* | |
| SIZE | IN | CM | IN | CM | IN | CM | IN | CM | IN | CM | IN | CM |
| XS | 37.0 | 94 | 16.5 | 42 | 24.0 | 61 | 25.8 | 65.5 | 22.4 | 57 | 24.4 | 62 |
| S | 39.4 | 100 | 16.9 | 43 | 24.8 | 63 | 26.6 | 67.5 | 23.2 | 59 | 25.2 | 64 |
| M | 41.7 | 106 | 17.3 | 44 | 25.6 | 65 | 27.4 | 69.5 | 24.0 | 61 | 26.0 | 66 |
| L | 44.1 | 112 | 17.7 | 45 | 26.4 | 67 | 28.1 | 71.5 | 24.8 | 63 | 26.8 | 68 |
| XL | 47.2 | 120 | 18.5 | 47 | 27.2 | 69 | 28.9 | 73.5 | 25.6 | 65 | 27.6 | 70 |
| 2XL | 50.4 | 128 | 19.3 | 49 | 28.0 | 71 | 29.7 | 75.5 | 26.4 | 67 | 28.3 | 72 |
| 3XL | 53.5 | 136 | 20.1 | 51 | 28.7 | 73 | 30.5 | 77.5 | 27.2 | 69 | 29.1 | 74 |

| WOMEN'S V-TWIN FIT VESTS | | | | | | |
|--------------------------|-------|-----|----------|------|------------------------|----|
| SIZE | CHEST | | SHOULDER | | FRONT LENGTH FROM HSP* | |
| | IN | CM | IN | CM | IN | CM |
| XS | 34.6 | 88 | 10.8 | 27.5 | 21.3 | 54 |
| S | 37.0 | 94 | 11.4 | 29 | 22.0 | 56 |
| M | 39.4 | 100 | 12.0 | 30.5 | 22.8 | 58 |
| L | 41.7 | 106 | 12.6 | 32 | 23.6 | 60 |
| XL | 44.9 | 114 | 13.4 | 34 | 24.4 | 62 |
| 2XL | 48.0 | 122 | 14.2 | 36 | 25.2 | 64 |
| 3XL | 51.2 | 130 | 15.0 | 38 | 26.0 | 66 |
| 1W | 69.7 | 177 | 12.6 | 32 | 24.4 | 62 |
| 2W | 49.2 | 125 | 13.4 | 34 | 25.2 | 64 |
| 3W | 52.4 | 133 | 14.2 | 36 | 26.0 | 66 |

| WOMEN'S CHAPS | | | | |
|---------------|-------|-----|--------|------|
| SIZE | WAIST | | INSEAM | |
| | IN | CM | IN | CM |
| S | 35.5 | 90 | 33 | 83.5 |
| M | 37 | 94 | 33 | 83.5 |
| L | 40 | 102 | 33 | 83.5 |
| XL | 43 | 110 | 33 | 83.5 |
| 2XL | 46.5 | 118 | 33 | 83.5 |
| 3XL | 50 | 126 | 33 | 83.5 |
| 4XL | 53 | 134 | 33 | 83.5 |
| 5XL | 56 | 142 | 33 | 83.5 |

| PART NUMBER SIZE GUIDE- APPAREL** | | | | | | | | | | | | | | | | |
|-----------------------------------|----|----|----|----|----|----|------|-----|-------|-----|-------|-----|-----|----|----|----|
| SIZE | XS | S | M | L | LT | XL | XL'T | 2XL | 2XL'T | 3XL | 3XL'T | 4XL | 5XL | 1W | 2W | 3W |
| PART # | 01 | 02 | 03 | 06 | 08 | 09 | 11 | 12 | 13 | 14 | 20 | 15 | 16 | 17 | 18 | 19 |

**Based on the size you are ordering, add the above number to the end of the item's part number. LT, XL'T, 2XL'T, 3XL'T are tall sizes.

| PART NUMBER SIZE GUIDE- FOOTWEAR** | | | | | | | | | | | | |
|------------------------------------|----|----|----|----|----|----|----|----|----|--|--|--|
| SIZE | 05 | 06 | 07 | 08 | 09 | 10 | 11 | 12 | 13 | | | |
| PART # | 05 | 06 | 07 | 08 | 09 | 10 | 11 | 12 | 13 | | | |

**Based on the size you are ordering, add the above number to the end of the item's part number.

| MEN'S TEES | | | | | | | | |
|------------|-------|------|----------|----|------------------------|----|---------------|----|
| | CHEST | | SHOULDER | | FRONT LENGTH FROM HSP* | | SLEEVE LENGTH | |
| SIZE | IN | CM | IN | CM | IN | CM | IN | CM |
| S | 18.5 | 47 | 17.3 | 44 | 28.0 | 71 | 7.5 | 19 |
| M | 20.5 | 52 | 18.9 | 48 | 28.7 | 73 | 8.3 | 21 |
| L | 22.4 | 57 | 20.5 | 52 | 29.5 | 75 | 9.1 | 23 |
| XL | 24.4 | 62 | 22.0 | 56 | 30.3 | 77 | 9.8 | 25 |
| 2XL | 26.4 | 67 | 23.6 | 60 | 31.1 | 79 | 10.6 | 27 |
| 3XL | 28.3 | 72 | 25.2 | 64 | 31.9 | 81 | 11.4 | 29 |
| 4XL | 31.3 | 79.5 | 27.6 | 70 | 33.1 | 84 | 12.6 | 32 |
| 5XL | 34.3 | 87 | 29.9 | 76 | 34.3 | 87 | 13.8 | 35 |

| MEN'S FASHION FIT TEES | | | | | | | | |
|------------------------|-------|----|----------|------|------------------------|----|---------------|----|
| | CHEST | | SHOULDER | | FRONT LENGTH FROM HSP* | | SLEEVE LENGTH | |
| SIZE | IN | CM | IN | CM | IN | CM | IN | CM |
| S | 18.5 | 47 | 17.5 | 44.5 | 28.3 | 72 | 6.7 | 17 |
| M | 20.5 | 52 | 19.1 | 48.5 | 29.1 | 74 | 7.5 | 19 |
| L | 22.4 | 57 | 20.7 | 52.5 | 29.9 | 76 | 8.3 | 21 |
| XL | 24.4 | 62 | 22.2 | 56.5 | 30.7 | 78 | 9.1 | 23 |
| 2XL | 26.4 | 67 | 23.8 | 60.5 | 31.5 | 80 | 9.8 | 25 |
| 3XL | 28.3 | 72 | 25.4 | 64.5 | 32.3 | 82 | 10.6 | 27 |

FASHION FIT TEES

A close fit made in a lighter weight jersey, giving a comfortable and sleek silhouette.

| MEN'S SLEEVELESS TEES | | | | | | |
|-----------------------|-------|------|----------|----|------------------------|----|
| | CHEST | | SHOULDER | | FRONT LENGTH FROM HSP* | |
| SIZE | IN | CM | IN | CM | IN | CM |
| S | 18.5 | 47 | 16.1 | 41 | 28.0 | 71 |
| M | 20.5 | 52 | 17.7 | 45 | 28.7 | 73 |
| L | 22.4 | 57 | 19.3 | 49 | 29.5 | 75 |
| XL | 24.4 | 62 | 20.9 | 53 | 30.3 | 77 |
| 2XL | 26.4 | 67 | 22.4 | 57 | 31.1 | 79 |
| 3XL | 28.3 | 72 | 24.0 | 61 | 31.9 | 81 |
| 4XL | 31.3 | 79.5 | 26.4 | 67 | 33.1 | 84 |
| 5XL | 34.3 | 87 | 28.7 | 73 | 34.3 | 87 |

| MEN'S HOODIES & SWEATS | | | | | | |
|------------------------|-------|------|----------|----|------------------------|----|
| | CHEST | | SHOULDER | | FRONT LENGTH FROM HSP* | |
| SIZE | IN | CM | IN | CM | IN | CM |
| S | 20.1 | 51 | 18.1 | 46 | 26.8 | 68 |
| M | 22.0 | 56 | 19.7 | 50 | 27.6 | 70 |
| L | 24.0 | 61 | 21.3 | 54 | 28.3 | 72 |
| XL | 26.0 | 66 | 22.8 | 58 | 29.1 | 74 |
| 2XL | 28.0 | 71 | 24.4 | 62 | 29.9 | 76 |
| 3XL | 29.9 | 76 | 26.0 | 66 | 30.7 | 78 |
| 4XL | 32.9 | 83.5 | 28.3 | 72 | 31.9 | 81 |
| 5XL | 35.8 | 91 | 30.7 | 78 | 33.1 | 84 |

| MEN'S SHIRTS | | | | | | |
|--------------|-------|------|----------|----|------------------------|----|
| | CHEST | | SHOULDER | | FRONT LENGTH FROM HSP* | |
| SIZE | IN | CM | IN | CM | IN | CM |
| S | 20.1 | 51 | 18.1 | 46 | 29.9 | 76 |
| M | 22.0 | 56 | 19.7 | 50 | 30.7 | 78 |
| L | 24.0 | 61 | 21.3 | 54 | 31.5 | 80 |
| XL | 26.0 | 66 | 22.8 | 58 | 32.3 | 82 |
| 2XL | 28.0 | 71 | 24.4 | 62 | 33.1 | 84 |
| 3XL | 29.9 | 76 | 26.0 | 66 | 33.9 | 86 |
| 4XL | 32.9 | 83.5 | 28.3 | 72 | 35.0 | 89 |
| 5XL | 35.8 | 91 | 30.7 | 78 | 36.2 | 92 |

| WOMEN'S TEES- CLOSE FIT (STRETCH FABRIC) | | | | | | | | |
|--|-------|----|-------|----|----------|------|------------------------|----|
| | CHEST | | WAIST | | SHOULDER | | FRONT LENGTH FROM HSP* | |
| SIZE | IN | CM | IN | CM | IN | CM | IN | CM |
| XS | 15.4 | 39 | 13.4 | 34 | 15.0 | 38 | 25.6 | 65 |
| S | 16.5 | 42 | 14.6 | 37 | 15.6 | 39.5 | 26.0 | 66 |
| M | 17.7 | 45 | 15.7 | 40 | 16.1 | 41 | 26.4 | 67 |
| L | 18.9 | 48 | 16.9 | 43 | 16.7 | 42.5 | 26.8 | 68 |
| XL | 20.5 | 52 | 18.5 | 47 | 17.5 | 44.5 | 27.2 | 69 |
| 2XL | 22.0 | 56 | 20.1 | 51 | 18.3 | 46.5 | 27.6 | 70 |
| 3XL | 23.6 | 60 | 21.7 | 55 | 19.1 | 48.5 | 28.0 | 71 |

| WOMEN'S TEES- RELAXED FIT | | | | | | | | |
|---------------------------|-------|----|-------|------|----------|------|------------------------|----|
| | CHEST | | WAIST | | SHOULDER | | FRONT LENGTH FROM HSP* | |
| SIZE | IN | CM | IN | CM | IN | CM | IN | CM |
| XS | 16.9 | 43 | 15.2 | 38.5 | 15.4 | 39 | 24.8 | 63 |
| S | 18.1 | 46 | 16.3 | 41.5 | 15.9 | 40.5 | 25.2 | 64 |
| M | 19.3 | 49 | 17.5 | 44.5 | 16.5 | 42 | 25.6 | 65 |
| L | 20.5 | 52 | 18.7 | 47.5 | 17.1 | 43.5 | 26.0 | 66 |
| XL | 22.0 | 56 | 20.3 | 51.5 | 17.9 | 45.5 | 26.4 | 67 |
| 2XL | 23.6 | 60 | 21.9 | 55.5 | 18.7 | 47.5 | 26.8 | 68 |
| 3XL | 25.2 | 64 | 23.4 | 59.5 | 19.5 | 49.5 | 27.2 | 69 |

| WOMEN'S TANKS- CLOSE FIT | | | | | |
|--------------------------|-------|----|-------|----|------------------------|
| | CHEST | | WAIST | | FRONT LENGTH FROM HSP* |
| SIZE | IN | CM | IN | CM | IN |
| XS | 15.4 | 39 | 13.4 | 34 | 25.2 |
| S | 16.5 | 42 | 14.6 | 37 | 25.6 |
| M | 17.7 | 45 | 15.7 | 40 | 26.0 |
| L | 18.9 | 48 | 16.9 | 43 | 26.4 |
| XL | 20.5 | 52 | 18.5 | 47 | 26.8 |
| 2XL | 22.0 | 56 | 20.1 | 51 | 27.2 |
| 3XL | 23.6 | 60 | 21.7 | 55 | 27.6 |

| WOMEN'S TANKS- RELAXED FIT | | | | | |
|----------------------------|-------|----|-------|------|------------------------|
| | CHEST | | WAIST | | FRONT LENGTH FROM HSP* |
| SIZE | IN | CM | IN | CM | IN |
| XS | 16.9 | 43 | 15.2 | 38.5 | 24.0 |
| S | 18.1 | 46 | 16.3 | 41.5 | 24.4 |
| M | 19.3 | 49 | 17.5 | 44.5 | 24.8 |
| L | 20.5 | 52 | 18.7 | 47.5 | 25.2 |
| XL | 22.0 | 56 | 20.3 | 51.5 | 25.6 |
| 2XL | 23.6 | 60 | 21.9 | 55.5 | 26.0 |
| 3XL | 25.2 | 64 | 23.4 | 59.5 | 26.4 |

| WOMEN'S HOODIES & SWEATS | | | | | | | |
|--------------------------|-------|----|-------|----|----------|------|------------------------|
| | CHEST | | WAIST | | SHOULDER | | FRONT LENGTH FROM HSP* |
| SIZE | IN | CM | IN | CM | IN | CM | IN |
| XS | 19.3 | 49 | 17.7 | 45 | 17.5 | 44.5 | 24.8 |
| S | 20.5 | 52 | 18.9 | 48 | 18.1 | 46 | 25.2 |
| M | 21.7 | 55 | 20.1 | 51 | 18.7 | 47.5 | 25.6 |
| L | 22.8 | 58 | 21.3 | 54 | 19.3 | 49 | 26.0 |
| XL | 24.4 | 62 | 22.8 | 58 | 20.1 | 51 | 26.4 |
| 2XL | 26.0 | 66 | 24.4 | 62 | 20.9 | 53 | 26.8 |
| 3XL | 27.6 | 70 | 26.0 | 66 | 21.7 | 55 | 27.2 |

| WOMEN'S SHIRTS | | | | | | | |
|----------------|-------|----|-------|----|----------|------|------------------------|
| | CHEST | | WAIST | | SHOULDER | | FRONT LENGTH FROM HSP* |
| SIZE | IN | CM | IN | CM | IN | CM | IN |
| XS | 17.3 | 44 | 16.1 | 41 | 15.4 | 39 | 25.0 |
| S | 18.5 | 47 | 17.3 | 44 | 15.9 | 40.5 | 25.4 |
| M | 19.7 | 50 | 18.5 | 47 | 16.5 | 42 | 25.8 |
| L | 20.9 | 53 | 19.7 | 50 | 17.1 | 43.5 | 26.2 |
| XL | 22.4 | 57 | 21.3 | 54 | 17.9 | 45.5 | 26.6 |
| 2XL | 24.0 | 61 | 22.8 | 58 | 18.7 | 47.5 | 27.0 |
| 3XL | 25.6 | 65 | 24.4 | 62 | 19.5 | 49.5 | 27.4 |

| MEN'S GLOVES | | |
|--------------------|-----|-------|
| HAND CIRCUMFERENCE | | |
| SIZE | IN | CM |
| S | 8.1 | 20.65 |
| M | 8.4 | 21.45 |
| L | 8.8 | 22.25 |
| XL | 9.1 | 23.05 |
| 2XL | 9.4 | 23.85 |
| 3XL | 9.7 | 24.65 |
| 4XL | 10 | 25.45 |

| WOMEN'S GLOVES | | |
|--------------------|-----|------|
| HAND CIRCUMFERENCE | | |
| SIZE | IN | CM |
| S | 7.2 | 18.3 |
| M | 7.5 | 19.1 |
| L | 7.8 | 19.9 |
| XL | 8.2 | 20.7 |

| MEN'S FOOTWEAR | | | | |
|----------------|------|----|------|----|
| USA | EU | UK | IN | CM |
| 7 | 39 | 6 | 9.8 | 25 |
| 8 | 41 | 7 | 10.2 | 26 |
| 9 | 42 | 8 | 10.6 | 27 |
| 10 | 43 | 9 | 11 | 28 |
| 11 | 44.5 | 10 | 11.4 | 29 |
| 12 | 46 | 11 | 11.8 | 30 |
| 13 | 47 | 12 | 12.2 | 31 |

| WOMEN'S FOOTWEAR | | | | |
|------------------|------|-----|------|----|
| USA | EU | UK | IN | CM |
| 5 | 35 | 2.5 | 8.7 | 22 |
| 6 | 36 | 3.5 | 9 | 23 |
| 7 | 37.5 | 4.5 | 9.4 | 24 |
| 8 | 38.5 | 5.5 | 9.8 | 25 |
| 9 | 40 | 6.5 | 10.2 | 26 |
| 10 | 41.5 | 7.5 | 10.6 | 27 |
| 11 | 42.5 | 8.5 | 11 | 28 |

| HELMETS | | | |
|---------|---|-------------|---------|
| SIZE | HAT SIZE | IN | CM |
| XS | 6 ³ / ₄ | 21.3 | 54 |
| S | 6 ⁷ / ₈ - 7 | 21.7 - 22 | 55 - 56 |
| M | 7 ¹ / ₈ - 7 ¹ / ₄ | 22.4 - 22.8 | 57 - 58 |
| L | 7 ³ / ₈ - 7 ¹ / ₂ | 23.2 - 23.6 | 59 - 60 |
| XL | 7 ⁵ / ₈ - 7 ³ / ₄ | 24 - 24.4 | 61 - 62 |
| 2XL | 7 ⁷ / ₈ - 8 | 24.8 - 25.2 | 63 - 64 |
| 3XL | 8 ¹ / ₈ - 8 ¹ / ₄ | 25.6 - 26 | 65 - 66 |
| 4XL | 8 ³ / ₈ - 8 ¹ / ₂ | 26.4 - 26.8 | 67 - 68 |

| BELTS | | |
|-------|---------|-----------|
| SIZE | IN | CM |
| S | 30 - 34 | 76 - 86 |
| M | 34 - 38 | 86 - 96 |
| L | 38 - 42 | 96 - 106 |
| XL | 42 - 46 | 106 - 116 |
| 2XL | 46 - 50 | 116 - 126 |





HERITAGE

GETAWAY JACKET, BROWN

CE

A modern classic brown leather riding jacket. Ventilation zips on sleeves and back to keep cool in warmer temperatures. This jacket has protectors that are lightweight, slim, very flexible and highly protective, making them feel invisible when worn. Contrast suede and embroidery Indian Motorcycle® branding on back body panel.

VENTED

FEATURES

0.9-1.0mm leather shell
Fixed lining
Removable liner- quilted vest
4 exterior & 1 interior pocket
Snap cuffs
V-Twin Fit
CE certified; EU Regulation 2016/425
FprEN 17092-4:2019

ADDITIONAL FEATURES

Removable slim, lightweight & flexible protectors to shoulders & elbows (EN1621-1:2012)

XS-3XL

2860501

// LARGE SIZES

HERITAGE

CLASSIC JACKET 2, BROWN

CE

AVAILABLE FOR DELIVERY NOW

A true Indian Motorcycle® classic. This timeless style jacket features a slightly worn dark brown leather. Snap down collar stops any flapping when riding. The jacket also features a removable quilted plaid liner for cooler days.

FEATURES

1.2-1.4mm thick leather shell
Fixed lining- plaid
Removable liner- quilted plaid vest
2 exterior, 1 chest & 1 interior pocket
Zippered side expansion panels; snap wrist adjustment tabs
V-Twin Fit
CE certified; Directive 89/686/CE V06.
French Protocol Level 1

ADDITIONAL FEATURES

Removable CE protectors in shoulders & elbows; snap down collar; antique brass zippers; embroidered script logo on front left; applique/embroidered script logo on back; circle headaddress patch on right sleeve



S-5XL

2867669

HERITAGE

FLAT TRACK JACKET, BLACK

CE

AVAILABLE FOR DELIVERY NOW

A racing inspired jacket featuring colored panels and a removable quilted liner to keep the wearer warm and dry.

VENTED

FEATURES

Fixed lining- airmesh
Removable liner- quilted vest
2 exterior & 1 interior pocket
Snap cuffs
V-Twin Fit
CE certified; EU Regulation 2016/425
prEN 17092-4:2018

ADDITIONAL FEATURES

Removable CE protectors in shoulders & elbows (EN 1621-1:2012); action back; snap down collar; contrast stripe detailing across sleeves; adjustable side tabs; embroidered & applique branding on front; American flag patch on left sleeve, Motor Oil patch on right sleeve



XS-3XL

2869638



LARGE SIZES

 INDIAN MOTORCYCLE® VEST 2, BLACK

AVAILABLE FOR DELIVERY NOW

This black leather vest with laced side seams is a traditional staple for the cruiser rider. The laces can be adjusted to allow expansion where needed. The logos are a combination of embroidery and leather applique.

QUAL FEATURES

1.0-1.2mm thick dull leather shell
Fixed lining
2 exterior & 1 interior pocket
Lace up sides
V-Twin Fit

2863711



// LARGE SIZES

ROGUE

FLINT JACKET, BLACK

AVAILABLE FOR DELIVERY NOW

A water resistant jacket featuring contrast colored panels and a removable quilted liner to keep the wearer warm and dry. Ventilation panels allow cooling airflow on warmer days.

CE

FEATURES

Fixed Lining- airmesh
Removable liner- quilted vest
Hidden ventilation panels on arms & back
Reflective piping on back
2 exterior & 1 interior pocket
Side adjust zippers & snap wrist cuffs
V-Twin Fit
CE certified; EU Regulation 2016/425
prEN 17092-4:2018

ADDITIONAL FEATURES

Removable CE protectors in shoulders & elbows (EN 1621-1:2012); action back; embroidered logo on front; applique & embroidered branding on back; snap down collar; circle headress patch on right sleeve

S-5XL

2869636



// TALL SIZES

// LARGE SIZES

ROGUE

BECKMAN JACKET, BLACK

AVAILABLE FOR DELIVERY NOW

A timeless leather riding jacket in jet black leather. The self colored stripes and angular panel lines are modern and masculine. Hidden vents help with airflow on warm days and a removable quilted liner offers insulation on cooler rides.

CE

FEATURES

1.0-1.2mm leather shell
Fixed lining- airmesh
Removable liner- quilted vest
Hidden ventilation panels on arms & back
2 exterior & 1 internal pocket
Side adjust zippers & snap wrist cuffs
V-Twin Fit
CE certified; EU Regulation 2016/425
prEN 17092-4:2018

ADDITIONAL FEATURES

Removable CE protectors in shoulders & elbows (EN 1621-1:2012); action back; antique brass zippers; reflective piping on back; embroidered logo on front; applique & embroidered branding on back; snap down collar

S-5XL, XLT-3XLT

2869635



TALL SIZES

LARGE SIZES

ROGUE

SOFTSHELL CASUAL JACKET, BLACK

A casual hooded softshell jacket with fleece interior, offers warmth and wind resistance on cooler days.

FEATURES

- Unlined
- 3 exterior pockets
- Hood
- Reflective trim on hood and chest zipper
- V-Twin Fit

XS-5XL, XLT-3XLT 2869741



TALL SIZES

LARGE SIZES

HERITAGE

SPRINGFIELD MESH 2 JACKET, BLACK

AVAILABLE FOR DELIVERY NOW

A slick update on the original Springfield Mesh jacket for riding in warmer climates. Mesh panels allow air to flow freely helping the rider stay cool. There are leather powerstretch panels on the elbows for flexibility. A removable lightweight windproof liner offers insulation when temperatures drop.

MESH

FEATURES

- Fixed lining- airmesh
- Windproof removable liner- long sleeve
- 2 exterior & 2 interior pockets
- Powerstretch elbow panels; zip side adjusters; snap cuff
- V-Twin Fit
- CE certified; EU Regulation 2016/425
- prEN 17092-4:2018

S-5XL, XLT-3XLT 2868916

ADDITIONAL FEATURES

- Removable CE protectors in shoulders & elbows (EN 1621-1:2012); action back; 3M® reflective piping; patch on chest; script logo embroidered & applique on back; headress patch on right sleeve; American flag patch on left sleeve





// LARGE SIZES

HERITAGE INDIAN MOTORCYCLE® COLOR BLOCK RAINSUIT - UNISEX, BLACK

AVAILABLE FOR DELIVERY NOW

A two piece jacket and pant rainsuit constructed of waterproof and breathable nylon. Every seam is taped to ensure you stay dry in the rain. Designed to be worn over your leathers this is a large fit. The pant has removable suspenders.

WATERPROOF

FEATURES

Fixed lining- airmesh
1 interior pocket
Adjustable Velcro® cuffs & waist; stirrups; full length Velcro® on front opening to reinforce zip closure
V-Twin Fit

ADDITIONAL FEATURES

100% waterproof & breathable; reflective piping; removable suspenders; stows into self storage bag attached to jacket lining; branding on the front, legs & back

XS-5XL

2867447





ROGUE

BLAKE JACKET, BLACK

AVAILABLE FOR DELIVERY NOW

VENTED

A soft black leather jacket with stretch side panels and contrast color twin racing stripes across the sleeves. Jacket has modern Indian Motorcycle branding on the back panel and also features a removable quilted liner for cooler days. This jacket has protectors that are lightweight, slim, very flexible and highly protective, making them feel almost invisible when worn. It makes the jacket very comfortable, with a slimmer profile shoulder and elbow, but still provides the level of protection as other CE certified protectors.

FEATURES

Fixed lining
Removable liner- quilted vest
2 exterior & 1 interior pocket
Adjustable hem tabs; snap cuffs; stretch side panels Women's V-Twin Fit
CE certified; EU Regulation
2016/425 FprEN 17092-4:2018

ADDITIONAL FEATURES

Removable CE protectors in shoulders & elbows (EN 1621-1:2012); action back; applique & embroidered logo on back; embossed circle headaddress icon logo on hem

XS-3XL

2869723



HERITAGE

SPRINGFIELD MESH 2 JACKET, BLACK

AVAILABLE FOR DELIVERY NOW

A slick update on the original Springfield Mesh jacket for riding in warmer climates. Mesh panels allow air to flow freely, helping the rider stay cool. There are leather powerstretch panels on the elbows for flexibility. A removable lightweight windproof liner offers insulation when temperatures drop.

MESH

FEATURES

Fixed lining- airmesh
Windproof removable liner- long sleeve 2 exterior & 2 interior pockets
Powerstretch elbow panels; zip side panels; snap cuffs
Women's V-Twin Fit
CE certified; EU Regulation 2016/425 prEN 17092-4:2018

ADDITIONAL FEATURES

Removable CE protectors in shoulders & elbows (EN 1621-1:2012); 3M® reflective piping; action back; patch on chest; script logo applique & embroidered on back; leather logo patch on back; headaddress patch on right sleeve; American flag patch on left sleeve

XS-3XL

2869625

LARGE SIZES



HERITAGE

INDIAN MOTORCYCLE® VEST 2, BLACK

AVAILABLE FOR DELIVERY NOW

A traditional staple for cruiser riders. The side laces can be adjusted to allow expansion where needed. The logos are a combination of embroidery and leather applique. Branded rivets decorate the shoulder and back panel.

CASUAL

FEATURES

1.0-1.2mm thick leather shell
Fixed lining
2 exterior & 1 interior pocket
Lace up sides
Women's V-Twin Fit

XS-3XL, 1W-3W

2863716



ROGUE

LANA DENIM JACKET, BLACK

This is a casual denim jacket with light wash for worn in look. Jacket has tonal embroidered icon logo on back neck.

CASUAL FEATURES

Unlined
4 exterior pockets
Snap down collar
Front zip covered with snap down placket
Zip cuffs

XS-3XL

2860623

ROGUE

SOFTSHELL JACKET, BLACK

A casual hooded softshell jacket with fleece interior, offers warmth and wind resistance on cooler days.

CASUAL FEATURES

Unlined
3 exterior pockets
Hood
Reflective trim on hood and sleeve zipper
Women's V-Twin Fit

XS-3XL

2869754



ETA MARCH

MESH 2 GLOVE, BLACK

CE

SUMMER An update on our popular Mesh Glove. A combination of mesh to allow airflow and leather palm and finger panels construct this glove. The lightweight design offers very little bulk and is easy to wear in warm weather conditions.

FEATURES

Mesh glove with leather palm
Gel padded palm
Velcro® wrist closure
Touchscreen index tip
Mens & Womens CE certified; EU
Regulation 2016/425. EN13594:2015

MEN'S: S-4XL **2860629**
WOMEN'S: S-XL **2860630**



DRIFTER MESH GLOVE, BLACK

CE

AVAILABLE FOR DELIVERY NOW. FINAL SEASON

SUMMER Constructed using a combination of mesh, to allow airflow, and leather palm and finger panels. This lightweight glove is easy to wear in warm weather conditions.

FEATURES

Mesh glove with leather palm & wrist
Velcro® wrist closure Touchscreen leather
on fingertip & thumb Mens CE certified;
Directive 89/686/EEC.
EN 13594:2015

S-4XL **2867449**



FINGERLESS GLOVE, BLACK

AVAILABLE FOR DELIVERY NOW. FINAL SEASON

SUMMER A cruiser style fingerless glove in black leather. A double leather and gel palm panel adds comfort. The hooks on the end of the finger tips allow the glove to be removed easily.

FEATURES

Full leather construction
Gel padded palm
Velcro® wrist closure
Laser etched logo

MEN'S: S-4XL **2863720**
WOMEN'S: S-XL **2863721**



ETA MARCH

FLAT TRACK GLOVE, BLACK

CE

MID SEASON This is a sporty riding glove with leather palm and neoprene back of hand construction. This glove offers hard knuckle protection.

FEATURES

Leather & neoprene construction
Hard knuckle protector
Velcro® wrist closure
Mens CE certified; EU Regulation
2016/425. EN13594:2015

S-4XL **2860626**





GETAWAY GLOVE, BROWN **CE**
MID SEASON A modern classic brown leather glove for mid season riding.

FEATURES

Full leather construction
 Interior Lining
 Velcro® wrist closure
 Mens & Womens CE certified; EU
 Regulation 2016/425. EN13594:2015

S-4XL 2860624



PASSAGE GLOVE, BLACK **CE**
MID SEASON AVAILABLE FOR DELIVERY NOW
 A modern and stylish glove with hard knuckle protector, outer padding and Velcro® strap closure.

FEATURES

Mixed textile & leather construction Hard knuckle protector
 Velcro® wrist closure
 Touchscreen index & thumb tips
 Mens CE certified; Directive 89/686/EEC. EN 13594:2015

S-4XL 2868680



RETRO 2 GLOVE, BLACK **CE**
MID SEASON An update on our popular Retro Glove. Black leather with Indian Motorcycle® red and cream leather panels. This glove is a perfect match to several of the Indian Motorcycle® jackets. The padded knuckle, double leather contrast palms and cool branding make this a stylish glove.

FEATURES

Full leather construction
 Padded knuckles
 Velcro® wrist closure
 Mens & Womens CE certified; EU
 Regulation 2016/425. EN13594:2015

MEN'S: S-4XL 2860627
WOMEN'S: S-XL 2860628



CLASSIC GLOVE, BLACK **CE**
MID SEASON AVAILABLE FOR DELIVERY NOW
 Mid season, classic black leather glove. Simple styling with double leather panels, perforated leather finger panels and Velcro® closure.

FEATURES

Full leather construction
 Perforated inner finger panels
 Exposed seam construction with double leather panel on palms
 Velcro® wrist closure
 Mens & Womens CE certified; EU
 Regulation 2016/425. EN13594:2015

MEN'S: S-4XL 2869717
WOMEN'S: S-XL 2869718



CINDER GLOVE, BROWN **CE**
MID SEASON AVAILABLE FOR DELIVERY NOW
 A sporty style glove with contrasting perforated panels, Velcro® closure, and emblem patch. Complements nicely with the Benjamin Jacket.

FEATURES

Full leather construction
 Padded palm
 Velcro® wrist closure
 Touchscreen fingertip & thumb
 Mens CE certified; Directive 89/686/EEC. EN 13594:2015

S-4XL 2868678



WINTER GLOVE, BLACK **CE**
WINTER AVAILABLE FOR DELIVERY NOW
 A warm insulated glove for winter riding, with hard knuckle protectors. A Velcro® wrist adjuster and draw cord cuff keep the cold out.

FEATURES

Mixed textile & leather construction Hard knuckle protector
 Velcro® wrist closure
 Touchscreen index & thumb tips
 Men's CE certified; EU Regulation 2016/425. EN13594:2015

S-4XL 2869729



SOLO GLOVE, BLACK **CE**
MID SEASON AVAILABLE FOR DELIVERY NOW
 A strong and lightweight glove with hard knuckle protector offers protection and modern style.

FEATURES

Mixed textile & leather construction Hard knuckle protector
 Velcro® wrist closure
 Touchscreen fingertip & thumb
 Mens CE certified; Directive 89/686/EEC. EN 13594:2015

S-4XL 2868679



ADVENTURE HELMET - MATTE STRIPE, GRAY

AVAILABLE FOR DELIVERY NOW

FEATURES

Matte finish
100% fiberglass outer shell; EPS inner shell
Fixed lining
Weight: 1250g
Safety: DOT certified; ECE certified

ADDITIONAL FEATURES

Detachable cheek pads & sun peak;
D-ring closure; goggle fastener at back;
Bluetooth® compatible

XS-2XL 2869727



ADVENTURE HELMET - GLOSS BLACK, BLACK

AVAILABLE FOR DELIVERY NOW

FEATURES

Glossy finish
100% fiberglass outer shell; EPS inner shell
Fixed lining
Weight: 1250g
Safety: DOT certified; ECE certified

ADDITIONAL FEATURES

Detachable cheek pads & sun peak;
D-ring closure; goggle fastener at back;
Bluetooth® compatible

XS-2XL 2869728

NEW

MODULAR MATTE HELMET, BLACK/RED

FEATURES

Matte UV lacquer finish
100% fiberglass outer shell; EPS inner shell
Fixed lining
Weight: 1640g
Safety: DOT certified ECE certified

ADDITIONAL FEATURES

Detachable cheek pads; D-ring closure;
Anti-fog Pinlock® 30, anti-scratch shield
coatings; Bluetooth® compatible;
inner sun visor

XS-2XL 2860895





LIBERTY JET HELMET, BLACK

AVAILABLE FOR DELIVERY NOW

FEATURES

Matte ABS outer shell; EPS inner shell
Removable, washable lining
Weight: 1250g
Safety: DOT certified; ECE certified

ADDITIONAL FEATURES

Anti-scratch visor; top & rear vents;
inner sun visor; Bluetooth® compatible

XS-2XL 2867454



ADVENTURE HELMET SUNPEAK

AVAILABLE FOR DELIVERY NOW

Only works with the following helmets, 2869727 & 2869728.

| | |
|---------------------|----------------|
| ONE SIZE | |
| MATTE STRIPE | 2869793 |
| WHITE | 2869794 |



// FINAL SEASON

FREEWAY FULL FACE HELMET VISOR

AVAILABLE FOR DELIVERY NOW. FINAL SEASON

| | |
|-----------------|----------------|
| ONE SIZE | 2867460 |
|-----------------|----------------|



LIBERTY JET HELMET VISOR

AVAILABLE FOR DELIVERY NOW

| | |
|-----------------|----------------|
| ONE SIZE | 2867461 |
|-----------------|----------------|



RETRO FULL FACE HELMET VISOR

AVAILABLE FOR DELIVERY NOW

Only works with the following full face helmets, 2868683 & 2869630.

| | |
|-----------------|----------------|
| ONE SIZE | |
| GRAY | 2868890 |
| CLEAR | 2868829 |





MATTE STRIPE FULL FACE HELMET, BLACK

AVAILABLE FOR DELIVERY NOW

FEATURES

UV lacquer finish
100% fiberglass outer shell; EPS inner shell
Fixed inner lining
Weight: 1450g
Safety: DOT certified; ECE certified

ADDITIONAL FEATURES

Anti-fog Pinlock® 30, anti-scratch shield coatings; detachable cheek pads; D-ring closure; Bluetooth® compatible

XS-2XL

2869630



RETRO FULL FACE HELMET, WHITE

AVAILABLE FOR DELIVERY NOW

FEATURES

Glossy, UV lacquer finish
100% fiberglass outer shell; EPS inner shell
Fixed inner lining
Weight: 1450g
Safety: DOT certified; ECE certified

ADDITIONAL FEATURES

Anti-fog Pinlock® 30, anti-scratch shield coatings; detachable cheek pads; quick release chin strap; Bluetooth® compatible

XS-2XL

2868683

// LARGE SIZES

RETRO OPEN FACE HELMET, RED

AVAILABLE FOR DELIVERY NOW

FEATURES

Glossy UV lacquer finish
100% fiberglass outer shell; EPS inner shell
Fixed lining
Weight: 1150g
Safety: DOT certified; ECE certified

ADDITIONAL FEATURES

Detachable sunpeak & cheek pads; D ring closure; goggle fastener at back; Bluetooth® compatible; Chrome piping

XS-4XL

2868872




LARGE SIZES
RETRO OPEN FACE HELMET, BLACK

AVAILABLE FOR DELIVERY NOW

FEATURES

Glossy UV lacquer finish
 100% fiberglass outer shell; EPS inner shell
 Fixed lining
 Weight: 1150g
 Safety: DOT certified; ECE certified

ADDITIONAL FEATURES

Detachable sunpeak & cheek pads;
 D-ring closure; goggle fastener at back;
 Bluetooth® compatible; Chrome piping

XS-4XL
2868870

LARGE SIZES
RETRO OPEN FACE HELMET, MATTE BLACK

AVAILABLE FOR DELIVERY NOW

FEATURES

Matte UV lacquer finish
 100% fiberglass outer shell; EPS inner shell
 Fixed lining
 Weight: 1150g
 Safety: DOT certified; ECE certified

ADDITIONAL FEATURES

Detachable sunpeak & cheek pads; D-ring closure;
 goggle fastener at back; Bluetooth® compatible

XS-4XL
2868869

LARGE SIZES
RETRO OPEN FACE HELMET, SILVER

AVAILABLE FOR DELIVERY NOW

FEATURES

Glossy UV lacquer finish
 100% fiberglass outer shell; EPS inner shell
 Fixed lining
 Weight: 1150g
 Safety: DOT certified; ECE certified

ADDITIONAL FEATURES

Detachable sunpeak & cheek pads;
 D-ring closure; goggle fastener at back;
 Bluetooth® compatible

XS-4XL
2868871



// LARGE SIZES

CARBON OPEN FACE HELMET, BLACK

AVAILABLE FOR DELIVERY NOW

FEATURES

Matte UV lacquer finish 100% carbon fiber outer shell; EPS inner shell
Fixed lining
Weight: 1050g
Safety: DOT certified; ECE certified

ADDITIONAL FEATURES

Detachable sunpeak & cheek pads;
D-ring closure; goggle fastener at back;
Bluetooth® compatible

XS-4XL

2869633



// LARGE SIZES

OPEN FACE HELMET - STRIPE, WHITE

AVAILABLE FOR DELIVERY NOW

FEATURES

Glossy UV lacquer finish
100% fiberglass outer shell; EPS inner shell
Fixed lining
Weight: 1150g
Safety: DOT certified; ECE certified

ADDITIONAL FEATURES

Detachable sunpeak & cheek pads;
D-ring closure; goggle fastener at back;
Bluetooth® compatible

XS-4XL

2869628



// LARGE SIZES

OPEN FACE HELMET - MATTE STRIPE, BLACK

AVAILABLE FOR DELIVERY NOW

FEATURES

Matte UV lacquer finish
100% fiberglass outer shell; EPS inner shell
Fixed lining
Weight: 1150g
Safety: DOT certified; ECE certified

ADDITIONAL FEATURES

Detachable sunpeak & cheek pads;
D-ring closure; goggle fastener at back;
Bluetooth® compatible

XS-4XL

2869629





// LARGE SIZES

TWO TONE OPEN FACE HELMET, SILVER/BLACK

AVAILABLE FOR DELIVERY NOW

FEATURES

Glossy UV lacquer finish
100% fiberglass outer shell; EPS inner shell
Fixed lining
Weight: 1150g
Safety: DOT certified; ECE certified

ADDITIONAL FEATURES

Detachable sunpeak & cheek pads;
D-ring closure; goggle fastener at back;
Bluetooth® compatible; Chrome piping

XS-4XL

2868897



// FINAL SEASON // LARGE SIZES

SCOUT® OPEN FACE HELMET, BLUE/WHITE

AVAILABLE FOR DELIVERY NOW

FEATURES

Glossy UV lacquer finish
100% fiberglass outer shell; EPS inner shell
Fixed lining
Weight: 1150g
Safety: DOT certified; ECE certified

ADDITIONAL FEATURES

Detachable sunpeak & cheek pads;
D-ring closure; goggle fastener at back;
Bluetooth® compatible; Chrome piping

XS-4XL

2868895



// LARGE SIZES

RETRO OPEN FACE HELMET, WHITE

AVAILABLE FOR DELIVERY NOW

FEATURES

Glossy UV lacquer finish
100% fiberglass outer shell; EPS inner shell
Fixed lining
Weight: 1150g
Safety: DOT certified; ECE certified

ADDITIONAL FEATURES

Detachable sunpeak & cheek pads;
D-ring closure; goggle fastener at back;
Bluetooth® compatible

XS-4XL

2868884



RETRO OPEN FACE HELMET BUBBLE VISOR

AVAILABLE FOR DELIVERY NOW

Only works with the following open face helmets: 2868684, 2868869, 2868870, 2868871, 2868872, 2868897, 2868895, 2869628, 2869633 & 2869629.

ONE SIZE

| | |
|----------------------|---------|
| A. CLEAR | 2868873 |
| B. GRAY | 2868874 |
| C. REFLECTIVE SILVER | 2868875 |
| D. ORANGE | 2868876 |
| E. RED | 2868877 |



RETRO OPEN FACE HELMET SUN PEAK

AVAILABLE FOR DELIVERY NOW

Only works with the following open face helmets: 2868684, 2868869, 2868870, 2868871, 2868872, 2868897, 2868895, 2869628, 2869633 & 2869629.

ONE SIZE

2868830

PINLOCK® 30 FOG RESISTANT INSERT LENS - CLEAR (NOT PICTURED)

AVAILABLE FOR DELIVERY NOW

ONE SIZE

2867462





MEN'S MESH SNEAKER

AVAILABLE FOR DELIVERY IN MAY

Casual day sneaker. Vibram® sole to provide grip and abrasion resistance. The premium cow leather, antique silver eyelets and breathable mesh panel design make this sneaker a favorite.

FEATURES

1.4-1.5 mm thick durable cow leather
Gusset tongue keeps out sand & water
Antibacterial microfiber insock & mesh lining
Includes black & red waxy shoe laces

SIZE: 7-13

2868685



MEN'S SNEAKER - BLACK

AVAILABLE FOR DELIVERY NOW

This sneaker provides a stable fit and protection. The Vibram® sole provides grip and abrasion resistance. The premium cow leather, antique silver eyelets and pinstripe design make this sneaker a favorite for riding and around town.

FEATURES

1.4-1.5mm thick durable cow leather
Gusset tongue keeps out sand & water
Antibacterial microfiber insock & mesh lining
Ankle protector, toe cap & heel cup
Gear shift pad
Includes black & red waxy shoe laces
CE certified. Personal Protective Equipment
Regulation 2016/425; EN 13634:2017

SIZE: 7-13

2867689

NEW

LARGE SIZES

MEN'S BRYANT SNEAKER, BLACK

This sneaker with Vibram® sole provides grip and abrasion resistance. The premium cow leather, antique silver and contrasting red eyelets and branding makes this sneaker a favorite for riding.

FEATURES

1.4-1.5mm thick durable cow leather
Gusset tongue keeps out sand & water
Antibacterial microfiber insock & mesh lining
Ankle protector
Gear shift pad
Includes black & gray waxy shoe laces
CE certified. Personal Protective Equipment Regulation
2016/425; EN 13634:2017

SIZE: 7-14

2860667

NEW

WOMEN'S BRYANT SNEAKER, BLACK

This sneaker with Vibram® sole provides grip and abrasion resistance. The premium cow leather, antique silver and contrasting red eyelets and branding makes this sneaker a favorite for riding.

FEATURES

1.4-1.5mm thick durable cow leather
Gusset tongue keeps out sand & water
Antibacterial microfiber insock & mesh lining
Gear shift pad
Includes black & gray waxy shoe laces
CE certified. Personal Protective Equipment Regulation
2016/425; EN 13634:2017

SIZE: 5-11

2860669



MEN'S SOCKS 2 PACK

AVAILABLE FOR DELIVERY NOW

Multi pack of branded Indian Motorcycle® socks. Each pack includes two pairs with different graphics. Socks have script logo and contrast stripes.

ONE SIZE (US 7-13) 2869777



MEN'S SOCKS 3 PACK

AVAILABLE FOR DELIVERY NOW

Multi pack of branded Indian Motorcycle® socks. Each pack includes three colors; black, gray and navy.

ONE SIZE (US 7-13) 2868691

NEED A REPAIR?

Nu Shoe® is the official cobbler for all Vibram® sole replacements.

www.nushoe.com/indian-boot-repair
Toll free number: 1-877-687-4631



BE LEGENDARY TEE

This navy tee shows the Indian Motorcycle® icon logo printed large across the back, in a distressed discharge print. The Indian Motorcycle® logo is printed small on the chest.

Fabric: 100% cotton single jersey
Graphics: Small logo print on front; large distressed icon print on back

S-3XL 2867589



NEW

GE 1920 SCOUT BIKE TEE, WHITE

Fabric: 100% cotton
Graphics: Print on front

S-3XL 2860928



BOMBER GIRL TANK, NAVY

Fabric: 100% cotton marl
Graphics: Print on front

S-3XL 2860771



// LARGE SIZES

AMERICAN ORIGINAL TEE, NAVY

Fabric: 100% cotton
Graphics: Print on front

S-5XL**2860773****HERITAGE****RACING SHIRT**

Our IMC Racing official team jersey.
A short sleeve racing shirt, with all over sublimation print.

Fabric: 100% polyester
Graphics: Full sublimation print

S-3XL**2868866****NEW****HEADRESS TEE, GRAY**

Fabric: 100% cotton marl
Graphics: Print on front

S-3XL**2860935****ROGUE**

// LARGE SIZES

BOMBER GIRL TEE, RED

Fabric: 100% cotton marl
Graphics: Print on front

S-5XL**2860772****HERITAGE**

// LARGE SIZES

CRAFTED TEE, GRAY

Fabric: 100% cotton marl
Graphics: Print on front

S-5XL**2860774****HERITAGE****NEW****ENGINE LOGO TEE, GRAY**

Fabric: 100% cotton marl
Graphics: Print on front and back

S-3XL**2860929****HERITAGE**



// LARGE SIZES

HERITAGE

COLOR HEADDRESS TEE, GRAY

Fabric: 100% cotton
Graphics: Print on front

S-5XL

2869660



HERITAGE

MARL TEE, RED

Fabric: 100% cotton marl
Graphics: Print on front

S-3XL

2869657



// LARGE SIZES

HERITAGE

LOGO TEES

Fabric: 100% cotton
Graphics: Print on front

S-5XL

ECRU (BLACK TEE) 2863317



HERITAGE

MONTAGE TEE, GRAY

Fabric: 100% cotton marl
Graphics: Print on front and back

S-3XL

2869733



MENS RACING TEAM TEE

S-3XL

2868904



MENS CHECKERED FLAG TEE

S-3XL

2868902



LARGE SIZES

ICON LOGO TEE, WHITE

Fabric: 100% cotton
Graphics: Print on front

S-5XL**2869661****ROGUE****QUICK DRY LOGO TEE, GRAY**

This tee offers UV protection SPF50,
quick dry and high wicking properties.

Fabric: 100% polyester
Graphics: Print on front

S-3XL**2869665****SLEEVELESS QUICK DRY TEE**

This tank offers UV protection SPF50,
quick dry and high wicking properties to
keep you cool and dry on summer rides.

Fabric: 100% polyester
Graphics: Small logo on front & back neck

S-3XL**2869656****ROGUE****WRECKING CREW TEE, GRAY**

Fabric: 100% cotton
Graphics: Print on front, back and sleeves

S-3XL**2869743****MOTO****FTR BIKE SKETCH TEE, BLACK**

Fabric: 100% cotton
Graphics: Print on front
Fit: Fashion

S-3XL**2869731****MOTO****MOTOCROSS TEE, WHITE**

Fabric: 60% cotton, 40% polyester slub
Graphics: Print and embroidery on front
Fit: Fashion

S-3XL**2860807**



NEW

LEGEND TEE, BLUE

Fabric: 100% cotton marl
Graphics: Print on front
Fit: Fashion

S-3XL

2860792

HEADDRESS TEE, BLUE

Fabric: 100% cotton marl
Graphics: Print on front
Fit: Fashion

S-3XL

2860937

BIKE TEE, GRAY

Fabric: 100% cotton marl
Graphics: Print on front
Fit: Fashion

S-3XL

2860789



GRAPHIC TEE, GRAY

Fabric: 100% cotton marl
Graphics: Print on front
Fit: Fashion

S-3XL

2860790

SHIELD CAMO TEE, BLACK

AVAILABLE FOR DELIVERY NOW

Fabric: 100% cotton
Graphics: Print on front

S-3XL

2869684

MENS CHAMPIONS TEE

S-3XL

2868910

MOTO

MOTO



MOTO

FTR FRONT TEE, WHITE

AVAILABLE FOR DELIVERY NOW

Fabric: 100% cotton
Graphics: Print on front
Fit: Fashion

S-3XL

2869732



MOTO

HAND PAINTED TEE

AVAILABLE FOR DELIVERY NOW

Fabric: 100% cotton
Graphics: Print on front
Fit: Fashion

S-3XL

NAVY

2869682



MOTO

ADVENTURE TEE, GRAY

AVAILABLE FOR DELIVERY NOW

Fabric: 100% cotton
Graphics: Print on front
Fit: Fashion

S-3XL

2869688



MOTO

FTR™ 1200 LOGO TEE

AVAILABLE FOR DELIVERY NOW

Fabric: 100% cotton
Graphics: Print on front
Fit: Fashion

S-3XL

BLACK

2868965

ECRU

2868966



MOTO

SHIELD 1200 TEE, BLACK

AVAILABLE FOR DELIVERY NOW

Fabric: 100% cotton
Graphics: Print on front
Fit: Fashion

S-3XL

2869690



MOTO

1901 BONNEVILLE TEE, WHITE

Fabric: 100% cotton
Graphics: Print on front
Fit: Fashion

S-3XL

2869746



MOTO

1901 SALT FLATS TEE, RED

Fabric: 100% cotton
 Graphics: Print on front
 Fit: Fashion

S-3XL**2869747**

MOTO

1901 MUNRO TEE, GRAY

Fabric: 100% cotton
 Graphics: Print on front
 Fit: Fashion

S-3XL**2869748****UV RACING TEE**

Celebrate the excitement and energy of the American Flat Track with this racing style tee. This long sleeved tee uses a bamboo charcoal coating to offer UV protection SPF50, along with thermal control, dry fast, and high wicking properties, to keep you cool and dry on summer rides.

Fabric: 100% polyester
 Graphics: Small FTR™ 1200 logo on chest; large logo on back; logo on left sleeve; thumb holes at cuff

S-3XL**2868970****IMC BIKE TEE**

FINAL SEASON

This red Indian Motorcycle® short sleeve tee is made in a cotton jersey slub and features a bike print using water-based inks for a soft feel.

Fabric: 100% cotton slub jersey
 Graphics: Large distressed print on front; small logo print on back neck; woven patch on right sleeve; "Since 1901" embroidered at back hem

S-3XL**2868923**



LONG SLEEVE HEADDRESS TEE

This tee features 2 in 1 sleeves, with a contrasting long sleeve under the short sleeve for a layered look. The Indian Motorcycle® headdress is printed in full color across the front.

Fabric: 100% cotton slub jersey
Graphics: Large distressed headdress print on front; small logo print on back; "Since 1901" embroidered on back hem; woven patch on right sleeve

S-3XL 2868808



MUNRO 1967 TEE

This Indian Motorcycle® red tee celebrates the record breaking achievement of Burt Munro, with a large front graphic featuring the Scout® Streamliner.

Fabric: 100% cotton single jersey
Graphics: Large distressed print on front; embroidered "B. Munro" on front hem ; woven patch on right sleeve

S-3XL 2868812



WRECKING CREW TEE, PORT

This dark red tee has a large front graphic based around the 'Wrecking Crew' racing team.

Fabric: 100% cotton single jersey
Graphics: Large distressed print on front; small racing logo on back; "Since 1901" embroidered on back hem; woven patch on right sleeve

S-3XL 2868817



BOMBER GIRL PRIDE TEE

Large front graphic featuring a retro styled pin-up girl.

Fabric: 100% cotton single jersey
Graphics: Distressed print on front; small distressed logo print on back; "Since 1901" embroidered at back hem; woven patch on right sleeve

S-3XL 2868809



COLOR HEADDRESS TEE

Celebrate the Indian Motorcycle® brand with this hand painted, full color headdress print.

Fabric: 100% cotton single jersey
Graphics: Large hand painted logo on front; small logo on back neck; woven patch on right sleeve

S-5XL 2869660



WAFFLE HENLEY

A long sleeve gray marl tee made in a textured waffle knit, the honeycomb design of the fabric allows air to flow easily so that the fabric dries quickly.

Fabric: 100% cotton waffle
Graphics: Small embroidered logo on front & back; leather patch at hem

S-3XL 2868925



ICON SCRIPT HOODIE

This soft, all-cotton hoodie features a winning combination of red, black, and ecru, and it has handwarmer pockets and a warm drawstring hood. There is embroidered Indian Motorcycle® branding on the front and back.

Fabric: 100% cotton loopback

Graphics: Embroidered logo on front & back

Additional Features: Two hand warmer pockets with snap closure; drawstring hood

S-3XL

2865194



LARGE SIZES

TONAL HOODIE, GRAY

Fabric: 55% cotton, 45% polyester marl loopback
Graphics: Print on front and sleeve

S-5XL

2860783

ROGUE

CHECKERED HOODIE, BLACK

AVAILABLE FOR DELIVERY NOW

Fabric: 100% cotton loopback
Graphics: Printed hood lining, embroidery on back

S-3XL

2868971

MENS WRECKING CREW HOODIE

S-3XL

2868906



ROGUE

WRECKING CREW STRIPE SWEAT, GRAY

AVAILABLE FOR DELIVERY NOW

Fabric: 100% cotton loopback

Graphics: Print on front, back and sleeves

S-3XL

2869745



IMC CONTRAST ZIP THRU

This contrasting zip-thru comes in light gray and dark gray marl. It features a large applique/embroidery on the back in antique white, and a small embroidery at the front chest. Branded zip pulls are used, along with a leather-look patch at the front hem.

Fabric: 70% cotton, 30% polyester loopback

Graphics: Small embroidered logo on chest, large embroidered print on back; leather-look patch on front hem; embroidered patch on right sleeve

S-3XL

2867566



RAGLAN TEE

Made in a soft slub jersey, this contrast raglan sleeve tee in moss gray and charcoal will be a casual staple during the upcoming weather transition months.

Fabric: 100% cotton slub jersey
Graphics: Large graphic on front small logo print on back neck; woven patch on right sleeve

S-3XL 2869663



LONG SLEEVE BOMBER GIRL PRIDE TEE

Large back graphic featuring a retro styled pin-up girl, and a large Indian Motorcycle® logo across the front chest and contrasting color sleeves for added style.

Fabric: 100% cotton single jersey
Graphics: Distressed print on front & back; "Since 1901" embroidered on back hem; woven patch on right sleeve

S-3XL 2868810



LARGE SIZES

LONG SLEEVE LOGO TEE, NAVY

Fabric: 100% cotton
Graphics: Print on front

S-5XL 2869662

HERITAGE



ROGUE

PRINTED SLEEVE TEE, BLACK

Fabric: 100% cotton
Graphics: Print on front, back and sleeve

S-3XL 2860781



ROGUE

WAFFLE PIQUET TEE, GRAY

Fabric: 60% cotton, 40% polyester marl
Graphics: Print on front and back

S-3XL

2860782



ROGUE

CHARCOAL MARL TEE, GRAY

Fabric: 100% cotton marl
Graphics: Print on front

S-3XL

2869664



LONG SLEEVE WRECKING CREW TEE

A long sleeved tee with large applique on the front and back, and contrasting sleeves.

Fabric: 100% cotton slub jersey
Graphics: Embroidery & applique on front & back; faux leather patch on right sleeve; stitched on stripes on sleeves

S-3XL

2868819



NEW

MOTO

BLOCK LOGO TEE, GRAY

Fabric: 100% cotton marl
Graphics: Print on front

S-3XL

2860938



RACER TEE

S-2XL

2868907



HERITAGE

BLOCK LOGO SWEAT, RED

Fabric: 70% cotton, 30% polyester marl loopback
Graphics: Embroidery on front

S-3XL

2869667



HERITAGE

CHARCOAL LOGO SWEAT, GRAY

Fabric: 70% cotton, 30% polyester marl loopback Graphics: Embroidery on front

S-3XL

2869790



HERITAGE

IMC HOODIE, BLACK

Fabric: 70% cotton, 30% polyester brushback Graphics: Embroidery on front and back

S-3XL

2863697



HERITAGE

LOGO HOODIE, GRAY

Fabric: 70% cotton, 30% polyester marl brushback Graphics: Embroidery on front and back

S-3XL

2869734



HERITAGE

ICON HOODIE, GRAY

Fabric: 70% cotton, 30% polyester marl loopback Graphics: Print on front and back

S-3XL

2869666



LOGO SWEAT

This classic navy sweat features subtle Indian Motorcycle® branding across the front in navy applique and embroidery. A small embroidery is placed at the back neck.

Fabric: 100% cotton

Graphics: Large embroidered logo on front; embroidery on back neck; "Since 1901" embroidery at back hem; leather patch on right sleeve

S-3XL

2868929



ROGUE

MERINO HALF ZIP, GRAY

Keeps you warm in the cold and cool in the heat. Fit and features provide ultimate comfort. Breathes to prevent overheating. Non itchy and naturally odor resistant. Machine washable and dries fast.

Fabric: 95% Merino wool, 5% nylon Graphics: Print on front

S-3XL

2869736



HERITAGE

PLAID SHIRT, NAVY

Fabric: 100% cotton

S-3XL 2860778



HERITAGE

PLAID SHIRT, BLACK

Fabric: 100% cotton
Graphics: Embroidery on back

S-3XL 2868933



ROGUE

BUFFALO PLAID SHIRT, GRAY

Fabric: 100% cotton
Graphics: Embroidery on front

S-3XL 2860784



MOTO

NEW

TWIN POCKET PLAID SHIRT, GRAY

Features a hidden printed headdress logo under the pocket flap for added detail

Fabric: 100% cotton

Graphics: Print on hem and under pocket

S-3XL 2860941



HERITAGE

PLAID SHIRT, RED

Fabric: 100% cotton
Graphics: Embroidery on front and back

S-3XL 2868821



// LARGE SIZES

HERITAGE

CASUAL SHIRT, BLACK

Fabric: 65% polyester, 35% cotton
Graphics: Embroidery on front and back

S-5XL 2863698



ROGUE

PLAID SHIRT, GRAY

Fabric: 100% cotton
Graphics: Embroidery on front

S-3XL 2868932



NAVY PLAID SHIRT

This soft plaid shirt features two front pockets, embroidered Indian Motorcycle® logo at the back neck and a leather-look patch applied to the front hem. The buttons at the front fastening, pockets, and cuffs are all branded.

Fabric: 100% cotton
Graphics: Embroidered logo at back neck;
embroidered and applique logo on back; two
leather-look patches on front; branded buttons

S-3XL 2867586



HERITAGE

SPARKLE TEE, PORT

Fabric: 65% polyester, 35% rayon
Graphics: Glitter print on front
Fit: Relaxed

XS-3XL 2869671



HERITAGE

ECRU LOGO V-NECK TEE, BLACK

Fabric: 95% cotton, 5% elastane
Graphics: Print on front
Fit: Close

XS-3XL 2863325



HERITAGE

IMC MARL TEE, GRAY

Lace ties at side seams.

Fabric: 50% cotton, 50% modal marl
Graphics: Print on front
Fit: Relaxed

XS-3XL 2869669



HERITAGE

STARLIGHT TEE, BLACK

Fabric: 50% cotton, 50% modal
Graphics: Print and diamante on front
Fit: Relaxed

XS-3XL 2869751



MOTO

OPEN BACK TANK, GRAY

This tank features a split at the centre back, low enough to provide modesty.

Fabric: 65% polyester, 35% viscose slub
Graphics: High density print on front
Fit: Relaxed

XS-3XL 2869677



HERITAGE

EMBELLISHED TEE, BLACK

Fabric: 95% cotton, 5% elastane
Graphics: Embellished and printed on front
Fit: Close

XS-3XL 2860794



MOTO

MOTOCROSS TEE, RED

Fabric: 60% cotton, 40% polyester slub
 Graphics: Print and embellished front
 Fit: Relaxed

XS-3XL 2860801

MOTO

GRADIENT LOGO TEE, BLACK

AVAILABLE FOR DELIVERY NOW

Fabric: 50% modal, 50% cotton
 Graphics: Print on front
 Fit: Relaxed

XS-3XL 2869709



MOTO

WOMEN'S FTR® 1200 LOGO TEE

Fabric: 100% cotton
Graphics: Print on front and back
Fit: Relaxed

XS-3XL
ECRU 2868973
BLACK 2868972



GRADIENT LOGO TEE

This flattering scoop neck tee features the shield Indian Motorcycle® logo.
Fabric: 50% modal, 50% cotton
Graphics: Large print on front; small print on back
Fit: Close Fit

XS-3XL 2869709



FINAL SEASON

STRIPE SLEEVE TEE, GRAY

AVAILABLE FOR DELIVERY NOW. FINAL SEASON

Fabric: 100% cotton
Graphics: Print on front and sleeves
Fit: Relaxed

XS-3XL 2869673



MOTO

STARLIGHT TEE

Made in a black cotton/modal fabric, this style features a print with applied diamantes for that added sparkle.
Fabric: 50% cotton, 50% modal
Graphics: Large print with rhinestones on front; glitter print on back neck
Fit: Relaxed Fit

XS-3XL 2869751



QUICK DRY TANK

This tank offers UV protection SPF50, quick dry and high wicking properties to keep you cool and dry on summer rides.

Fabric: 100% polyester

Graphics: Large headaddress logo print on front; small logo on back neck

Fit: Close Fit

XS-3XL

2869679



LOGO RAGLAN TEE

Made in a soft slub jersey, this 3/4 sleeve raglan tee in moss gray and charcoal will be a casual staple during the upcoming weather transition months.

Fabric: 100% cotton slub jersey

Graphics: Large graphic on front; small logo on back neck; woven patch on right sleeve

Fit: Relaxed Fit

XS-3XL

2869676



COLD SHOULDER TEE

Add a twist to a casual wardrobe with this cold shoulder black tee. Made in a cotton/modal mix, this style features an embroidered Indian Motorcycle® headaddress logo at the front chest.

Fabric: 50% cotton, 50% modal

Graphics: Large embroidered logo on front; "Since 1901" on back neck

Fit: Relaxed Fit

XS-3XL

2868934



PORT SPARKLE TEE

This tee uses a port color foil print for a subtle all over sparkle. The Indian Motorcycle® logo is printed across the chest in silver glitter print.

Fabric: 65% polyester, 35% rayon

Graphics: Large glitter print logo on front; port foil print speckles across fabric

Fit: Close Fit

XS-3XL

2869671





LARGE SIZES

HERITAGE

WOMEN'S FTR™ 1200 LOGO TEE

Celebrate the excitement and energy of the American Flat Track with this 1200 tee.

Fabric: 100% cotton single jersey
Graphics: Large print on front;
small logo at back neck
Fit: Close Fit

| | |
|--------|---------|
| XS-3XL | |
| ECRU | 2868973 |
| BLACK | 2868972 |



NEW

ROGUE

HEADRESS HOODIE, BLACK

Fabric: 55% cotton, 45% polyester brushback
Graphics: Print on front and back

XS-3XL 2860800



NEW

HERITAGE

PLAID SHIRT, PORT

This shirt has sleeve tab fastenings so you can wear the sleeves rolled up or down.

Fabric: 100% cotton
Graphics: Embroidery on front and back

XS-3XL 2860806

**RED PLAID SHIRT**

AVAILABLE FOR DELIVERY NOW

A soft cotton, wardrobe staple with adjustable sleeve that can be worn 3/4 length or full length. This shirt comes in a slim, flattering fit.

Fabric: 100% cotton plaid
Graphics: Embroidered logo on back
Additional Features: Branded buttons; faux leather patch on chest pocket
Fit: Close Fit

XS-3XL 2868805

**IMC MARL TEE**

A lightweight gray marl V-neck tee with lace ties at the side seams. An Indian Motorcycle® graphic is printed across the chest in an antique white, Indian Motorcycle® red and charcoal discharge ink.

Fabric: 50% cotton, 50% modal
Graphics: Large graphic on front
Fit: Relaxed Fit

XS-3XL 2869669

**ECRU LOGO V-NECK TEE**

AVAILABLE FOR DELIVERY NOW

This V-neck tee comes in a stretch fabric, and is cut for a close fit to the body. A large distressed Indian Motorcycle® logo is printed across the front.

Fabric: 95% cotton, 5% spandex stretch single jersey
Graphics: Distressed Indian Motorcycle® logo on the front; patch with graphics on the sleeve
Fit: Close Fit

S-3XL 2863325

**IMC CONTRAST ZIP THRU**

AVAILABLE FOR DELIVERY NOW

This classic gray marl zip-thru with contrast sleeves features a felt applique logo at the back, an embroidered script logo at the front chest and a headdress logo patch at the sleeve. This zip-thru is made in a soft cotton polyester mix and features a stylish collar.

Fabric: 70% cotton, 30% polyester
Graphics: Embroidered logo on front; embroidered & applique logo on back; woven patch on right sleeve; leather look patch at hem
Additional Features: Branded buttons & zippers

XS-3XL 2868943



HAND PRINTED TEE, BLUE

Fabric: 100% cotton
Graphics: Print on front

| SIZE: | PART #: |
|-----------------|-----------|
| 6-7 YEARS/ S | 286075602 |
| 8-9 YEARS/ M | 286075603 |
| 10-11 YEARS/ L | 286075606 |
| 12-14 YEARS/ XL | 286075609 |



HEADRESS ICON TEE, WHITE

Fabric: 60% cotton, 40% polyester slub
Graphics: Print on front

| SIZE: | PART #: |
|-----------------|-----------|
| 6-7 YEARS/ S | 286075702 |
| 8-9 YEARS/ M | 286075703 |
| 10-11 YEARS/ L | 286075706 |
| 12-14 YEARS/ XL | 286075709 |



MOTOCROSS TEE, WHITE

Fabric: 60% cotton, 40% polyester slub
Graphics: Print and embroidery on front

| SIZE: | PART #: |
|-----------------|-----------|
| 6-7 YEARS/ S | 286075802 |
| 8-9 YEARS/ M | 286075803 |
| 10-11 YEARS/ L | 286075806 |
| 12-14 YEARS/ XL | 286075809 |



| KID'S TEES | | | | | | | | |
|-----------------------|------|----|------|------|-------|----|-------|-------|
| YEARS | 6-7 | | 8-9 | | 10-11 | | 12-14 | |
| | IN | CM | IN | CM | IN | CM | IN | CM |
| CHEST | 13.8 | 35 | 14.5 | 38 | 16.1 | 41 | 17.9 | 45.5 |
| FRONT LENGTH FROM HSP | 19.7 | 50 | 21.5 | 54.5 | 23.2 | 59 | 25.9 | 65.75 |

| JUNIOR'S BODYSUIT | | | | | | |
|-----------------------|------|----|------|----|-------|----|
| MONTHS | 3-6 | | 6-12 | | 12-18 | |
| | IN | CM | IN | CM | IN | CM |
| CHEST | 9 | 23 | 9.5 | 24 | 10 | 25 |
| FRONT LENGTH FROM HSP | 15.5 | 40 | 16.5 | 42 | 17.5 | 44 |

| JUNIOR'S LOGO TEE | | | | | | | | |
|-----------------------|------|----|------|----|------|----|------|----|
| YEARS | 2-3 | | 3-4 | | 4-5 | | 5-6 | |
| | IN | CM | IN | CM | IN | CM | IN | CM |
| CHEST | 12.2 | 31 | 13 | 33 | 13.8 | 35 | 14.6 | 37 |
| FRONT LENGTH FROM HSP | 15 | 38 | 16.1 | 41 | 17.3 | 44 | 18.5 | 47 |



LONG SLEEVE BODYSUIT, ASSORTED

3 PACK

AVAILABLE FOR DELIVERY NOW

Fabric: 100% cotton
Graphics: Print on front & back

| | |
|-----------------|----------------|
| SIZE: | PART #: |
| 3-6 MONTHS/ S | 286880102 |
| 6-12 MONTHS/ M | 286880103 |
| 12-18 MONTHS/ L | 286880106 |



SHORT SLEEVE BODYSUIT, ASSORTED

3 PACK

AVAILABLE FOR DELIVERY NOW

Fabric: 100% cotton
Graphics: Print on front & back

| | |
|-----------------|----------------|
| SIZE: | PART #: |
| 3-6 MONTHS/ S | 286880202 |
| 6-12 MONTHS/ M | 286880203 |
| 12-18 MONTHS/ L | 286880206 |



LOGO TEES, ASSORTED

2 PACK

AVAILABLE FOR DELIVERY NOW

Fabric: 100% cotton
Graphics: Print on front & back

| | |
|---------------|----------------|
| SIZE: | PART #: |
| 2-3 YEARS/ XS | 286886701 |
| 3-4 YEARS/ S | 286886702 |
| 4-5 YEARS/ M | 286886703 |
| 5-6 YEARS/ L | 286886706 |

INDIAN MOTORCYCLE® EYEWEAR



IMC GOGGLE

AVAILABLE FOR DELIVERY NOW

CE



This custom Barstow goggle is a stylish and professional collaboration with 100%, featuring the custom jacquard logo of Indian Motorcycle® on the adjustable strap and etched logo on lens. It is equipped with triple-layer face foam providing excellent moisture management on the move and the gray anti-fog Lexan® lens with integrated pins for seamless tear off application. The upper vents in signature red force air in and channel out moisture to reduce fogging. CE certified; Directive 89/686/EEC. EN 1836:2005+A1:2007 Lens Filter Category 1.

ONE SIZE

2868961



// FINAL SEASON

COSTE GOGGLE

AVAILABLE FOR DELIVERY NOW. FINAL SEASON

CE



This custom goggle is a stylish and professional collaboration with 100% and artist Dimitri Coste. It is equipped with triple-layer face foam providing excellent moisture management on the move and the gray anti-fog Lexan® lens have integrated pins for seamless tear off application. The upper vents in signature red force air in and channel out moisture to reduce fogging. CE certified; Directive 89/686/EEC. EN 1836:2005+A1:2007 Lens Filter Category 1.

ONE SIZE

2869713





HERITAGE QUALITY TRUCKER HAT, BLACK

Fabric: Front: 100% cotton
Back: 100% polyester mesh
Features: Embroidered patch on front, curved skip

TRUCKER
ONE SIZE 2862313



ROGUE CIRCLE PATCH HAT, MULTICOLOR

Fabric: 100% cotton
Features: Embroidered graphic on front, graphic patch on the side, curved skip

ONE SIZE 2863628



HERITAGE CIRCLE ICON TRUCKER HAT, OLIVE

Fabric: Front: 100% cotton
Back: 100% polyester mesh
Features: Embroidered patch, curved skip

TRUCKER
ONE SIZE 2868694



HERITAGE BLOCK PATCH HAT

Fabric: Front: 100% cotton
Back: 100% polyester mesh
Features: Logo patch, curved skip

TRUCKER
ONE SIZE 2869641



HERITAGE LOGO HAT, BLACK

Fabric: 100% cotton
Features: Embroidered logo on front; contrast color under brim, curved skip

ONE SIZE 2863727



HERITAGE PORT MARL HAT, RED

Fabric: Front: 100% cotton
Back: 100% polyester mesh
Features: Leather patch, curved skip

TRUCKER
ONE SIZE 2869640



HERITAGE BAKER BOY HAT, GRAY

Fabric: 50% wool, 50% polyester
Features: Embroidered logo on back, quilted interior; snap down peak; curved skip

S/M 286896003
L/XL 286896006



HERITAGE ARMY HAT, GRAY

Fabric: 100% cotton
Features: Embroidered logo on front, curved skip

ONE SIZE 2868945



NEW

ROGUE IMC WOOL HAT, GRAY

Fabric: 60% wool, 40% nylon
Features: Woven patch on front, flat ski, adjustable leather closure

ONE SIZE 2860927



NEW

HERITAGE NEOPRENE MASK BALACLAVA, BLACK

Fabric: Shell: 92% polyester, 8% elastane
Lining: 95% cotton, 5% elastane
Features: Printed logos, neoprene detail on front

S/M 286090903
L/XL 286090906



NEW

HERITAGE FLEECE BALACLAVA, BLACK

Fabric: Shell: 95% polyamide, 15% elastane
Lining: 95% polyester, 5% elastane
Features: Printed logos

S/M 286091003
L/XL 286091006





ROGUE
TRUCKER

HIGH PROFILE BLOCK LOGO HAT, BLACK

Fabric: Front: 100% polyester,
Back: 100% polyester mesh
Features: Print on front, high profile fit, flat skip

ONE SIZE

2860747



ROGUE

FINAL SEASON

IMC FLEX FIT HAT, BLACK

Fabric: 97% cotton, 3% spandex
Features: Embroidered logo on front,
woven patch on back, flex fit, flat skip

S/M
L/XL

286869203

286869206



ROGUE
TRUCKER

CHECKERED HAT, BLACK

Fabric: Front: 100% cotton,
Back: 100% polyester mesh
Features: Embroidered logo on front, flat skip

ONE SIZE

2868959



MOTO

HIGH PROFILE DENIM HAT, BLUE

Fabric: Front: 100% cotton,
Back: 100% polyester mesh
Features: Print on front, high profile fit, flat skip

ONE SIZE

2860745



MOTO

HIGH PROFILE PATCH HAT, BROWN

Fabric: Front: 100% cotton,
Back: 100% polyester mesh
Features: Woven patch on front, high
profile fit, flat skip

ONE SIZE

2860746



MOTO

ICON LOGO HAT, MULTICOLOR

Fabric: 100% washed cotton canvas
Features: Woven patch on front, flat skip

ONE SIZE

2869761



MOTO

HEADRESS LOGO HAT, GRAY

Fabric: Front: 100% cotton,
Back: 100% polyester mesh
Features: Embroidered patch, flat skip

ONE SIZE

2867609



MOTO

SCRIPT ICON TRUCKER HAT, MULTICOLOR

Fabric: Front: 100% cotton,
Back: 100% polyester mesh
Features: Embroidered patch on front, flat skip

ONE SIZE

2869639



MOTO

FTR™ 1200 TRUCKER HAT, MULTICOLOR

Fabric: Front: 100% polyester foam,
Back: 100% polyester mesh
Features: Oil based print, curved skip

ONE SIZE

2868958



MOTO
TRUCKER

CAMO TRUCKER HAT, BLACK

Fabric: Front: 100% polyester foam,
Back: 100% polyester mesh
Features: Oil based print, flat skip

ONE SIZE 2869703



WOMEN'S DIAMANTE CAP, BLACK

Fabric: 100% cotton
Features: Diamante print on front, curved skip

ONE SIZE 2860749



COTTON LINEN SCARF, MULTICOLOR

78.7" (200cm) x 19.7" (50cm).

Fabric: 55% cotton, 45% linen
Features: Printed logos, wrinkle finish

ONE SIZE 2864426



BE LEGENDARY™ BANDANA, MULTICOLOR

23.6" (60cm) x 23.6" (60cm).

Fabric: 100% cotton
Features: Printed logos

ONE SIZE 2867608



INDIAN MOTORCYCLE® BANDANA, RED

23.6" (60cm) x 23.6" (60cm).

Fabric: 100% cotton
Features: Printed script & headdress logos

ONE SIZE 2863846



HEADDRESS MULTIFUNCTIONAL HEADWEAR, BLACK

Fabric: 100% polyester
Features: All over print

ONE SIZE
HEADDRESS 2869642
ICON LOGOS 2865233



HEADDRESS HEAD TIE, BLACK

Fabric: 100% cotton
Features: All over print, elasticated rear band for adjustability

ONE SIZE 2869643



HEAD TIE, BLACK

Fabric: 100% cotton
Features: All over print, elasticated rear band for adjustability

ONE SIZE 2865234



ICON HEAD WRAP

Embroidered patch logo at front and embroidered stitching at rear. Tie fasten back for close fit.

Graphics: Woven patch on front; embroidered script logo at rear Features: Tie fasten

ONE SIZE 2867606



ROGUE

Block Logo Beanie, Black

Fabric: 100% acrylic
Features: Branded wrap twill label

ONE SIZE 2860751



MOTO

Shield Patch Beanie, Blue

Fabric: 100% acrylic
Features: Logo patch on front

ONE SIZE 2860752



HERITAGE

Icon Fleece Beanie, Black

Fabric: Shell: 100% polyester fleece
Lining: 95% cotton, 5% elastane
Features: Embroidered logo on front and back, debossed logo on sides

ONE SIZE 2863997



HERITAGE

Ear Warmer, Black

Fabric: Shell: 95% polyester, 5% elastane
Lining: 95% polyester, 5% elastane
Features: Printed logo

ONE SIZE 2860742



HERITAGE

Reflective Logo Head Wrap, Black

Fabric: Shell: 95% polyester mesh, 5% elastane
Lining: 95% polyester mesh, 5% elastane
Features: Printed reflective logo

ONE SIZE 2860741



HERITAGE

Headdress Neck Warmer, Black

Fabric: Shell: 95% polyester, 5% elastane
Lining: 95% cotton, 5% elastane
Features: Printed logos, elastic toggle

ONE SIZE 2869764



HERITAGE

Head Wrap, Black

Fabric: Shell: 100% cotton
Lining: 100% polyester mesh
Features: Embroidered logo on front and back

ONE SIZE 2863844



HERITAGE

Icon Fleece Neck Warmer, Black

Fabric: Shell: 100% polyester fleece
Lining: 95% cotton, 5% elastane
Features: Embroidered logo on front and back, debossed logo on sides, elastic toggle

ONE SIZE 2863998



DOG COLLAR

This black leather dog collar is lined with soft, quick dry neoprene for a comfortable fit. Silver reflective, secure buckle with engraved logo and D-ring and 5 punch holes. Available in two sizes. Size S/M: 1" (2.5cm) wide x 12.2" - 15.7" (31cm - 40cm) adjustable length. Size L/XL: 1.8" (3.5cm) wide x 16.1" - 19.7" (41cm - 50cm) adjustable length.

S/M 286969503
L/XL 286969506



DOG LEASH

Soft black leather, made to stand up to any active dog and their human. Design features neoprene lined handle for ultimate comfort. Secure chunky antique silver buckle with spring mechanism and embossed branding. 0.8" (2cm) wide x 63" (160cm) tall.

ONE SIZE 2869696



FEEDING BOWL - 2 PACK

Our Indian Motorcycle® stainless steel dog bowl is perfect to feed your hungry pet. Bowls have printed logo, rubber bottom and polished finish for long-lasting beauty. Set includes two sizes: 21oz (610ml) & 32oz (910ml).

21oz. & 32oz. 2869699



SQUEAK BALL - 5 PACK

Keep your pet happy with set of five Indian Motorcycle® Squeak Tennis Balls. Made from a tough tennis ball material with built in squeaker, they float in water making them perfect whatever your surroundings. 2.5" (6.4cm) wide.

2.5" 2869700



CHEW TOY

This branded 100% natural rubber Indian Motorcycle® Chew Toy comes in a great shape for flinging, tugging and chewing. Great for dogs who love the standard bone shape. 2.8" (7cm) wide x 7.1" (18cm) tall.

2.8" x 7.1" 2869701



PULL TOY

Our shaped rubber Indian Motorcycle® tank Pull Toy will provide interactive fun for you and your dog. The rugged ropes will help keep gums and teeth clean and healthy. The tank has star shaped holes on each end so you can stuff your pet with treats. 7.1" (18cm) tall.

7.1" 2869702



WAXED COTTON BACKPACK

This waxed cotton backpack is stylish and large enough to carry everything from a laptop to a rain suit and much more. This backpack features premium heavy-duty waxed cotton canvas with leather trim and adjustable shoulder straps. Additional features include; fleece-lined laptop pocket, magnet closing on pockets and durable brass zippers. Bag dimensions: 19" (48cm) high x 13.3" (34cm) wide x 6.5" (17cm) deep.

ONE SIZE

2868686



WAXED COTTON DUFFLE BAG

This large duffle is durable and designed to carry a wide variety of gear. This bag features premium heavy-duty waxed cotton canvas with leather trim. The large main cargo space closes with a heavy-duty brass zipper. Bag dimensions: 12.5" (32cm) high x 20" (51cm) wide x 9.4" (24cm) deep.

ONE SIZE

2868687



WAXED COTTON MESSENGER BAG

This durable messenger bag is large enough to carry most laptops with 15" displays. This bag features premium heavy-duty waxed cotton canvas, and leather trim. Comes with an adjustable shoulder strap, and multiple interior pockets. Fleece-lined laptop compartment. Bag dimensions: 11.8" (30cm) high x 15" (38.5cm) wide x 5.4" (14cm) deep.

ONE SIZE

2868688



WAXED COTTON WASH BAG

A classic wash bag takes on extra style with Indian Motorcycle® branding. This durable waxed cotton canvas bag features embossed leather Indian Motorcycle® branding and branded zipper pull. This bag is lined and roomy enough to carry toiletries or be used to carry other small items. Bag dimensions: 7.5" (19cm) high x 16" (40cm) wide x 6" (15cm) deep.

ONE SIZE

2868690



IMC PERFORMANCE BACKPACK

This technical backpack is functional and large. This backpack features highly protective compartment for laptops up to 15". There is large main compartment, front compartment with internal organization, pen slots and additional secure-zip pocket, external pocket for sunglasses, phone or keys. There are two external mesh water bottle pockets on the sides. The back straps are padded and adjustable. The mesh padded back panel is highly breathable. Bag dimensions: 19.7" (50cm) high x 13.8" (35cm) wide x 6.3" (16cm) deep.

S/M

2860754

WAXED COTTON TOTE

This waxed cotton women's tote is a stylish and durable option made of a premium heavy-duty waxed cotton canvas with leather trim and adjustable shoulder straps. Additional features include; internal zip pocket, magnetic closing on pockets and flap, protective zip on main compartment using a durable brass zipper. Bag dimensions: 14" (36cm) high x 18" (4cm) wide x 6" (15cm) deep.

S/M

2868689

INDIAN MOTORCYCLE® BAGS & LUGGAGE



WOMEN'S QUILTED PURSE

This women's purse features soft black leather, quilted panels, branded lining and multiple compartments. 3.9" (10cm) high x 7.7" (19.5cm) wide.

ONE SIZE 2868946



BIKER CHAIN WALLET, BLACK

This wallet features high quality leather, embossed brand logo, branded lining, multiple compartments and a heavy metal chain. 3.7" (9.4cm) high x 7" (17.8cm) wide.

ONE SIZE 2867599



TRI-FOLD WALLET, BLACK

This premium black leather Tri-Fold Wallet provides a spacious, efficient, secure, and stylish way to carry valuables. Features branded 100% cotton lining and embossed logo. This wallet comes with a branded gift box. 4.3" (11cm) high x 3.7" (9.5cm) wide.

ONE SIZE 2869645



BI-FOLD WALLET, BLACK

This wallet features high quality leather, embossed brand logo and branded lining. 3.7" (9.5cm) high x 4.3" (11cm) wide.

ONE SIZE 2867600



LEATHER FOB KEY CARRIER

Real leather pouch to carry your bike key FOB in style. Embossed lock and unlock detailing at the back. Magnetic snap fastener included. (Key FOB not included.) 5.5cm x 5.5cm.

ONE SIZE 2867558



CHECKERED HEADDRESS SIGN

15.7" (40cm) wide x 11.8" (30cm) tall.

15.7" x 11.8"

2860759



INDIAN MOTORCYCLE® RACING SIGN

14.2" (36cm) wide x 11.8" (30cm) tall.

14.2" x 11.8"

2860760



BOMBER GIRL SIGN

15.7" (40cm) wide x 11.8" (30cm) tall.

15.7" x 11.8"

2860761

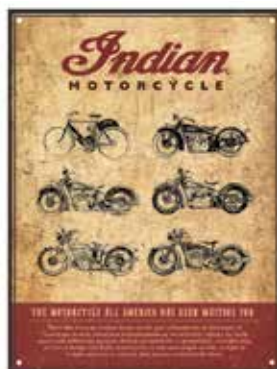


CIRCLE ICON LOGO SIGN

12" (30.5cm) diameter.

12" DIA.

2860762



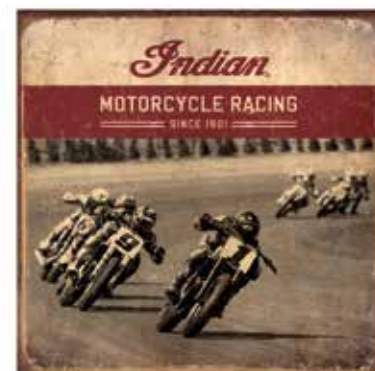
MONTAGE SIGN

AVAILABLE FOR DELIVERY NOW

11.8" (30cm) wide x 15.7" (40cm) tall.

15.7" x 11.8"

2869769



RACER SIGN

AVAILABLE FOR DELIVERY NOW

13.4" (34.1cm) wide x 13.4" (34.1cm) tall.

13.4" x 13.4"

2868949



WOODEN CHALK SIGN

AVAILABLE FOR DELIVERY NOW

15.7" (40cm) wide x 10.8" (27.5cm) tall.

15.7" x 10.8"

2868948



LEGEND LIVES SIGN

AVAILABLE FOR DELIVERY NOW

15.7" (40cm) wide x 11.8" (30cm) tall.

15.7" x 11.8"

2869768



GENUINE PARTS & ACCESSORIES SIGN

AVAILABLE FOR DELIVERY NOW

15.7" (40cm) wide x 11.8" (30cm) tall.

15.7" x 11.8"

2864421



CORRUGATED SIGN

15.7" (40cm) wide x 11.8" (30cm) tall.

15.7" x 11.8"

2869767



CIRCLE BOMBER GIRL METAL SIGN

Vintage inspired, this is an iconic sign with the retro styled pin-up girl. 12" (30.5cm) diameter.

12" DIA.

2868947



CIRCLE WOODEN SIGN

AVAILABLE FOR DELIVERY NOW

Diameter: 15.7" (40cm).

15.7" DIA.

2869766

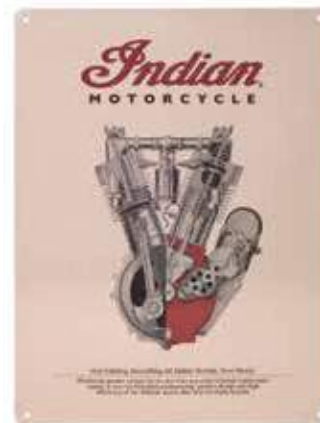


1920 DAYTONA RACER SIGN

This 1920 Daytona Racer metal sign will definitely arise your good old memories with its white rubber tires. 11.8" (30cm) wide x 15.7" (40cm) tall.

11.8" x 15.7"

2864424



1914 ENGINE SIGN

Fancy the sophisticated industrial drawings derived from the past? Sign features an embossed effect on the engine. 11.8" (30cm) wide x 15.7" (40cm) tall.

11.8" x 15.7"

2864423



ANTIQUE SIGN

Own a piece of historical Indian Motorcycle® marketing drawing with this Antique metal sign. 15.7" (40cm) wide x 11.8" (30cm) tall.

15.7" x 11.8"

2864425



SCOUT® 45 SIGN

Go back to history with this Indian® Scout® 45 metal sign-The Police Special. "Motorcycling is the quickest transportation on the earth." 15.7" (40cm) wide x 11.8" (30cm) tall.

15.7" x 11.8"

2864422



FIRST MOTORCYCLE SIGN

AVAILABLE FOR DELIVERY NOW

15.7" (40cm) wide x 11.8" (30cm) tall.

15.7" x 11.8"

2864420



GLASS BEER MUG

Textured beer glass with Indian Motorcycle® logo decal. Dishwasher safe. 21oz. (610ml). 3.4" (8.7cm) wide x 6.3" (16cm) tall.

21 OZ

2867604



RE-INTRODUCED

HEADRESS GLASS

AVAILABLE FOR DELIVERY NOW

Drink in style with dishwasher safe headress glasses. Set of 2. 3.5" (9cm) wide x 5.9" (15cm) tall.

2 PACK

2860969



RE-INTRODUCED

PINT GLASS

AVAILABLE FOR DELIVERY NOW

Embossed tall pint glass. Dishwasher safe. 17.6oz. (500ml). Base: 2.7" (6.8cm) wide Top: 3.1" (7.9cm) wide x 9.6" (24.5cm) tall.

17.6 OZ

2860968



RE-INTRODUCED

ICON LOGO EMBOSSED MUG

AVAILABLE FOR DELIVERY NOW

Embossed Indian Motorcycle logo. Microwave & dishwasher safe. 17.6oz. (500ml). 3.5" (9cm) wide x 4.1" (10.4cm) tall.

17.6 OZ

2860966



RE-INTRODUCED

SCRIPT LOGO BARREL MUG

AVAILABLE FOR DELIVERY NOW

Barrel shaped mug with a matte black finish. Microwave & dishwasher safe. 18.6oz. (530ml). 5.2" (13.3cm) wide x 4.3" (11cm) tall.

18.6 OZ

2860967



RE-INTRODUCED

HEADRESS LOGO MUG

AVAILABLE FOR DELIVERY NOW

Dishwasher safe. Hard wearing travel accessory for road trips or the kitchen. 5.5" (14cm) wide x 3.5" (9cm) tall.

17 OZ

2860965

INDIAN MOTORCYCLE® MAN CAVE, GARAGE & OUTDOOR



HOME RUG

Featuring the icon and headdress logos, this home rug will complete the total look of your man cave.
Size: 116.2" (295cm) x 76.8" (195cm).

116.2" x 76.8" 2864417



WOOL THROW

This high quality, hardy and timeless wool throw with iconic headdress logo will provide you with the comfort and warmth you need.
Machine washable. Made in USA.

80" x 50" 2864414



DOOR MAT

Featuring the Indian Motorcycle® icon logo, this door mat will complete the look of your man cave or home. Size: 35.4" (90cm) x 23.6" (60cm).

35.4" x 23.6" 2869779



HEADDRESS TOWEL

Featuring the headdress and script logos, this oversized towel will provide you with the comfort you need.
Size: 61.8" (157cm) x 31.5" (80 cm).

61.8" x 31.5" 2869650



LOGO BIKE MAT

A heavy-duty garage mat to park your bike on or kneel on while doing maintenance. Mat is 103.9" (264cm) x 52.4" (133cm).

103.9" x 52.4" 2863879



INDIAN MOTORCYCLE® HEADRESS FRIDGE MAGNETS

Give your fridge real Indian Motorcycle® style. Set includes two headdress shaped magnets in different colors. 3.1" (8cm) wide.

SET OF 2 2869772



INDIAN MOTORCYCLE® ICON FRIDGE MAGNETS

Give your fridge real Indian Motorcycle® style. Set includes two circle magnets with different logos and colors. 2.4" (6cm) wide.

SET OF 2 2869785



INDIAN MOTORCYCLE® SCRIPT FRIDGE MAGNETS

Give your fridge real Indian Motorcycle® style. Set includes two rectangle magnets in different colors. 3.1" (8cm) wide.

SET OF 2 2869786



2 IN 1 HEADRESS STOPPER

Enjoy wine without the troubles of too many gadgets laying around. This 2-in-1 Headdress Corkscrew and Wine Stopper will serve all your needs. Keep it at home or carry on road trips. 3.1" (7.8cm) x 5.1" (13cm).

3.1" x 5.1" 2869652



INDIAN MOTORCYCLE® BADGE LOGO BOTTLE OPENER

Pop tops in style with this premium metal bottle opener. It features a stylish design, efficient bottle opener, and red and silver Indian Motorcycle® logo. 2.4" (6cm) wide x 3.3" (8.5cm) tall.

2.4" x 3.3" 2863852



INDIAN MOTORCYCLE® SLAP KOOZIE

Keep your beverage cool and your hands warm with the Indian Motorcycle® slap koozie. 9" (23cm) wide x 3.1" (8cm) tall.

9" x 3.1" 2863959



ICON COASTERS

Enjoy your beverage while protecting your table or bar with Indian Motorcycle® rubber coasters. Diameter: 3.5" (9cm).

SET OF 6 2869773



WALL CLOCK

AVAILABLE FOR DELIVERY NOW

Brighten your man cave with the glow of the Indian Motorcycle® Wall Clock. This gloss black framed wall clock features a speedometer graphic which delivers precise and accurate time. Diameter: 11.8" (30cm). Depth: 2" (5cm).

11.8" DIA. 2869651



INDIAN MOTORCYCLE® GIFTS & COLLECTIBLES



BLACK LEATHER BELT

S-2XL

2869776



ICON BELT BUCKLE

3.6" WIDE

2869712



HEADDRESS BELT BUCKLE

3.6" WIDE

2869711



MEN'S CIRCLE BUCKLE

3.3" WIDE

2863822



SCRIPT LOGO RUBBER KEY RING

1.6" DIA.

2860769



METAL HEADDRESS KEY RING

5.1" WIDE

2860770



FTR™ 1200 RUBBER KEY RING

5.9" X 2.2"

2869775



ICON RUBBER KEY RING

1.8"

2869649



HEADDRESS RUBBER KEY RING

AVAILABLE FOR DELIVERY NOW

1.2" X 4.7"

2863982



SCRIPT LEATHER KEY RING

AVAILABLE FOR DELIVERY NOW

1.2" X 4.7"

2863926



ICON LEATHER KEY RING

2.2" X 3.9"

2869774



ICON LEATHER KEY RING

2.2" X 3.5"

2863965



LOGO PATCH

4.3" WIDE

2863861



COLORLED HEADDRESS PATCH

4.5" WIDE

2863864



CIRCLE ICON PATCH

3.1" WIDE

2863862



**INDIAN® SPORT SCOUT®
1:12 SCALE**

1:12 SCALE

2863683



TANK BADGE PINS

1.77CM WIDE

| | |
|------------------|---------|
| A SCOUT® | 2869780 |
| B CHIEF® CLASSIC | 2869782 |
| C SCOUT® SIXTY | 2869781 |
| D ROADMASTER® | 2869783 |



INDIAN MOTORCYCLE® LOGO PIN

1.2" WIDE 2863673



INDIAN MOTORCYCLE® CIRCLE ICON PIN

1" WIDE 2863674



INDIAN MOTORCYCLE® HEADDRESS PINS

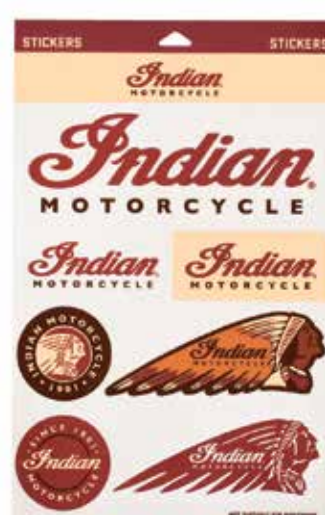
1.6" WIDE
BROWN 2863676
COLORED 2863675



FTR™ 1200 STICKER SET

Not for motorcycle bodywork.

13.25" x 8.5" 2869778



INDIAN MOTORCYCLE® STICKER SET

Not for motorcycle bodywork.

13.25" x 8.5" 2863865

INDIAN MOTORCYCLE® POLISHES



NO RINSE WASH & SHINE

This environmentally friendly product offers a fast, convenient way to wash a motorcycle with absolutely no rinsing. Simply add 1 ounce to a 2 gallon bucket of water, soak an Indian® Microfiber Towel in the bucket and wash a section at a time. This unique formula encapsulates the dirt, lifting it away from the surface allowing you to finish by simply drying with a clean Indian® Microfiber Towel. No streaks, smears or scratches.

SIZE:
16 OZ/ 12PK

PART #:
2863892



INSTANT DETAILER & SHINE

Detail in minutes with Instant Detailer and Shine. Spray it on a microfiber towel or directly on the bike to remove dirt and bugs. Use on windshields, bodywork and chrome. Safe for use on plexiglas, lexan®, acrylic, or factory coated windshields.

SIZE:
16 OZ/ 12PK

PART #:
2863893



ENGINE ENHANCER

Engine Enhancer is specially designed to preserve and restore the beauty of an engine and related parts. It provides a durable, factory finish without greasy or oily residue.

SIZE:
16 OZ/ 12PK

PART #:
2863894



WHITE WALL & WHEEL CLEANER

This non-corrosive cleaner will safely dissolve and remove grease, oil, road dirt, and brake dust from motorcycle tires and wheels. It is excellent for use on white wall tires, and is a biodegradable cleaner that is safe for all wheels, such as chrome, aluminum, clear or powder-coated wheels.

SIZE:
16 OZ/ 12PK

PART #:
2863895



SPRAY WAX & PROTECTANT

Spray Wax & Protectant can be used on any clean surface, wet or dry, and it will produce a durable, high-gloss shine with minimal effort. It contains no petroleum distillates or silicone.

SIZE:
16 OZ/ 12PK

PART #:
2863896



SUPER PLUSH M/F TOWEL-TWIN PACK

The only towels a rider should use on a motorcycle, these 100% microfiber towels won't scratch any surface. They are extremely plush, can be used with chemicals and cleaners, and are machine washable. Sold in packs of two towels.

SIZE:
PK/ 24PK

PART #:
2863897



TRAVEL PACK

A rider can keep an Indian Motorcycle® looking great while traveling by carrying this Travel Pack. It includes 4 oz. bottles of Bike Wash Concentrate, Spray & Wipe Instant Detailer, Liquid Spray Wax, and Leather, Vinyl & Rubber Conditioner, plus a plush microfiber towel.

SIZE:
12PK

PART #:
2863898



HEADADDRESS LOGO LINEN SCARF
PAGE 56

CASUALWEAR HANGER
(NOT PICTURED)

Order in multiples of 10.

ONE SIZE 2863397

When you’re enjoying your new Indian Motorcycle®, always wear a helmet and protective eyewear and clothing and insist that your passenger do the same. Ride within the limits of the law and your own abilities. Read and understand your owner’s manual. Never ride under the influence of drugs or alcohol. Indian Motorcycle® strongly recommends that all riders take a Motorcycle Safety Foundation® Rider Course. For a course near you, call 1-800-446-9227. Protect riders’ rights by joining the American Motorcyclist Association. For the name of your nearest Indian Motorcycle® dealership, call 1-800-POLARIS or visit our website at IndianMotorcycle.com. All riders are professionals and on a closed course. To the best knowledge of Polaris Industries Inc., the specifications, descriptions, and illustrative material contained herein are accurate as of the date this catalog was approved for printing. Indian Motorcycle® reserves the right, without prior notice, to discontinue at any time at its discretion any of the items herein or change specifications or designs without incurring any obligation to the customer. All items are subject to availability and prior sales by our dealers. Location photography by Todd Williams Photography. Studio Photography by SAGA Marketing. Catalog design by SAGA Marketing. Printed in the USA.

Indian® and Indian Motorcycle® are registered trademarks of Indian Motorcycle International, LLC. 3M® is a registered trademark of 3M Company. American Flat Track™ is a trademark of Daytona Motorsports Group. Bluetooth® is a registered trademark of Bluetooth Sig, Inc. Debonaire® is a registered trademark of Durfort Holdings, S.A. King Baby® is a registered trademark of King Baby Studio, Inc. Jack Daniel’s® is a registered trademark of Jack Daniel’s Properties, Inc. Lexan® is a registered trademark of Sabic Innovative Plastics IP B.V. NuShoe® is a registered trademark of NuShoe, Inc. Pinlock® is a registered trademark of Pinlock Patent B.V. besloten vennootschap (b.v.). Red Wing® and Red Wing Shoes® are registered trademarks of Red Wing Shoe Company, Inc. Velcro® is a registered trademark of Velcro Industries B.V. Ltd Co. Netherlands. Vibram® is a registered trademark of Vibram S.P.A. Corporation Italy. YKK® is a registered trademark of YKK Corporation.